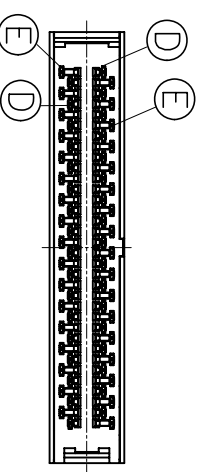
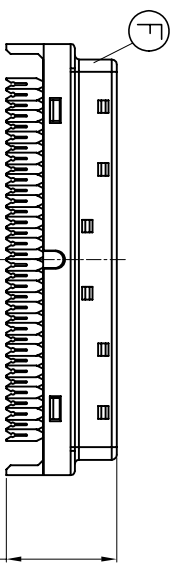
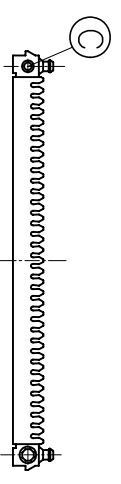
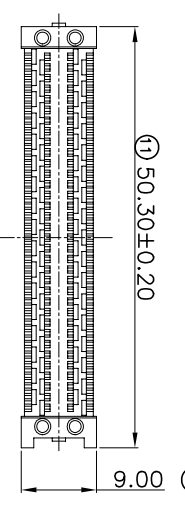
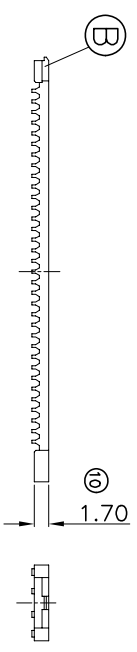
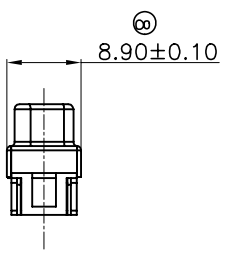
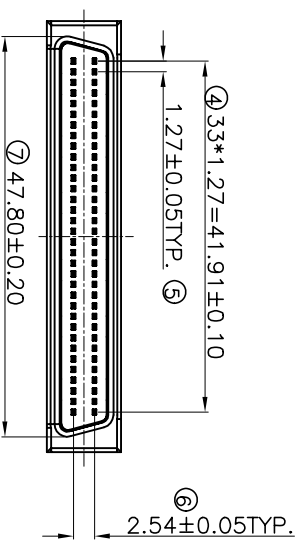
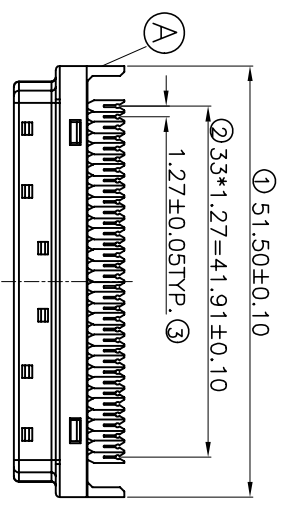


REV	MODIFICATION	DATE	DRAW	APPROVE
A	NEW DWG	2007.08.04	HUANG	KIVEN



ITEM	NAME	PART NO.	Q'TY	NOTE
F	SCSI 68P 00 刺破式铁壳	S140-068MRN101	1 PCS.	
E	SCSI 68P 00 刺破式翅脚端子	A147-68MPXPAD1	34 PCS [PCS/SET]	
D	SCSI 68P 00 刺破式长翅脚端子	A147-68MPXPB01	34 PCS [PCS/SET]	
C	SCSI 68P 00 刺破式翅脚压条	B147-068MNCAD2	2 PCS.	
B	SCSI 68P 00 刺破式翅脚中盖	B147-068MNCAD1	1 PCS.	
A	SCSI 68P 00 刺破式翅脚主体	B147-068MPHK01	1 PCS.	

-TOLERANCES- 公差参考表		UNLESS OTHERWISE SPECIFIED	
X.X ±0.25	X.X' ±3°	⊕	⊖
X.XX ±0.15	X.XX' ±1°	APPD: KEVIN	CHECK: TENA
X.XXX ±0.05	X.XXX' ±0.5°	核准: 校对: 校对: HUANG	DATE: 2007.08.04

TITLE: 产品名称: SCSI 68P MALE成品	PRODUCT NO: 产品编号: 147-068M4XPK01
SCALE UNIT: MM	TYPE: H
PAGE: 1/2	

