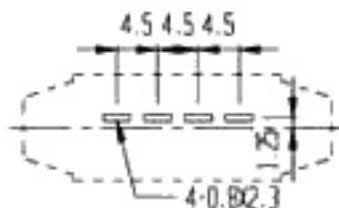
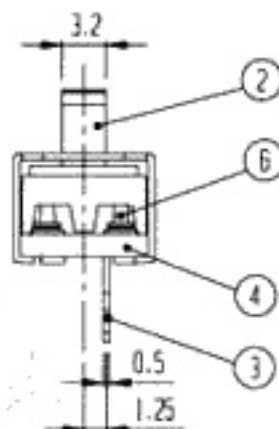
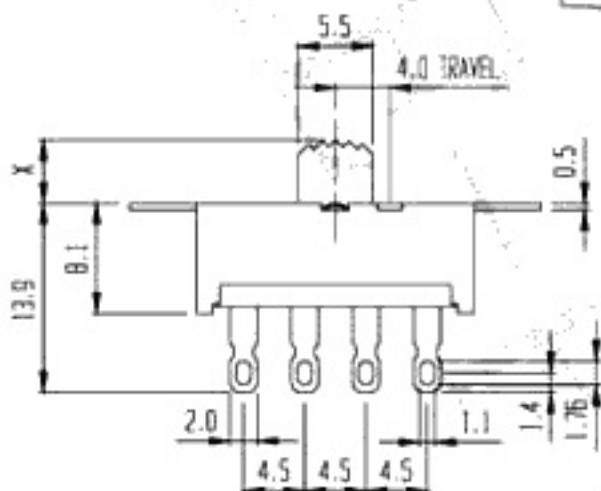


SCHMATIC



P.C.B. LAYOUT

RoHS Compliance



7	SPRING PLATE	P B S	2	
5	SPRING PLATE	P B S	1	
3	TERMINAL	Cu	4	Ag PLATED
1	FRAME	SPCC	1	Ni PLATED
NO.	PART	MATERIAL	QTY	REMARKS

6	CONTACT	Cu	2	Ag PLATED
4	TERMINAL BASE	PHENOL RESIN	1	NATURAL
2	KNOB	P C	1	A 3-13
NO.	PART	MATERIAL	QTY	REMARKS

ISSUED

SPECIFICATION

TITLE: AC POWER SWITCH (1P3T)



RATING: 1.5A 250V AC/3A 125V AC

CONTACT RESISTANCE: 30mΩ max.

INSULATION RESISTANCE: 500MΩ AT 500V DC

WITHSTAND VOLTAGE: AC 500V for 1 minute

OPERATION FORCE: REFER ATTACH SPECIFICATION

SWITCHING LIFE: 6K cycles min.

MODEL NO: ACS-13H01-F-A( )

TOLERANCE	UNIT: MM	DWN.	<i>hws</i>
UP TO 1.0:±0.1	SCALE: 2:1	CHK'D.	<i>hws</i>
1.0 TO 10.0:±0.2	VERSION: 05	APPD.	<i>hws</i>
OVER 10.0:±0.3	DRWG NO:		