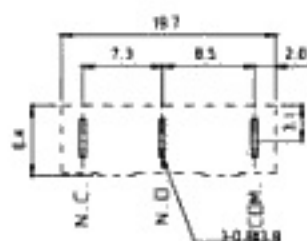
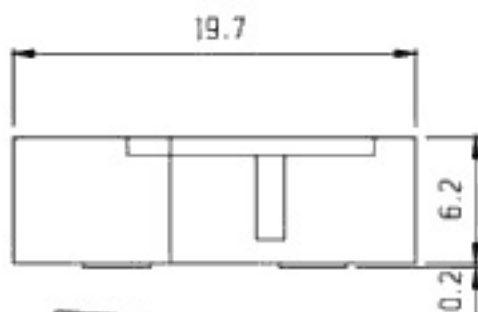


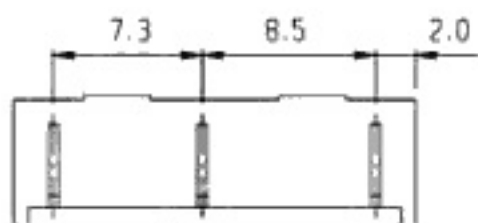
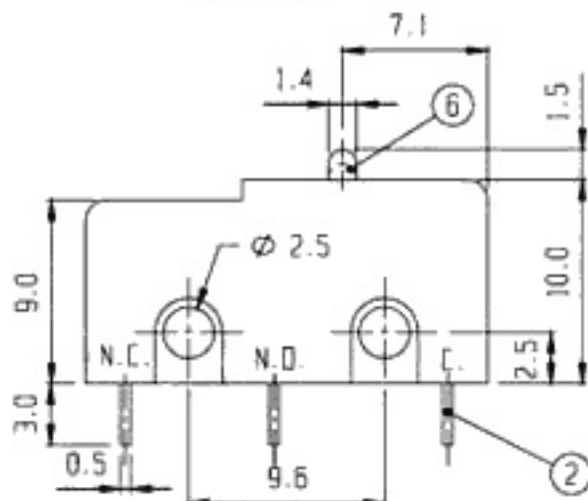
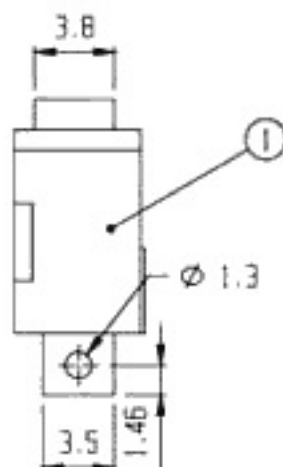
SCHEMATIC



P.C.B. LAYOUT



RoHS
Compliance



5	SPRING PLATE	P B S	1		6	PUSH BOTTON	P O M	1	
3	CONTACT	P B S	1	Ag PLATED	4	CONTACT POINT	Ag		
1	FRAME	P O M	1		2	TERMINAL	BRASS	1	Ag PLATED
NO.	PART	MATERIAL	QTY	REMARKS	NO.	PART	MATERIAL	QTY	REMARKS

ISSUED

SPECIFICATION

TITLE: MICRO SWITCH

RATING: AC 125V 1A

CONTACT RESISTANCE: 30mΩ max.

INSULATION RESISTANCE: 100MΩ AT 500V DC

WITHSTAND VOLTAGE: AC 250V for 1 minute

OPERATION FORCE: REFER ATTACH SPECIFICATION

SWITCHING LIFE: 100K cycles min.

MODEL NO: MS-103

TOLERANCE

UP TO 1.0:±0.1

1.0 TO 10.0:±0.2

OVER 10.0:±0.3

UNIT: MM

SCALE: 3:1

VERSION: 01

DRWG NO:

DWN.

CHK'D.

APPD.

