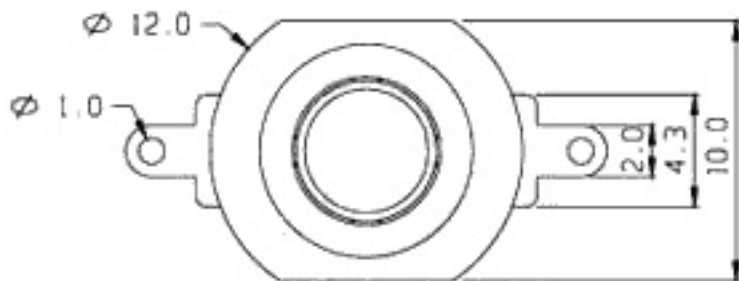
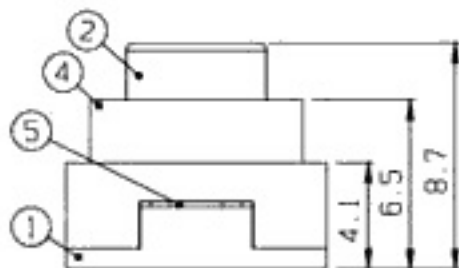
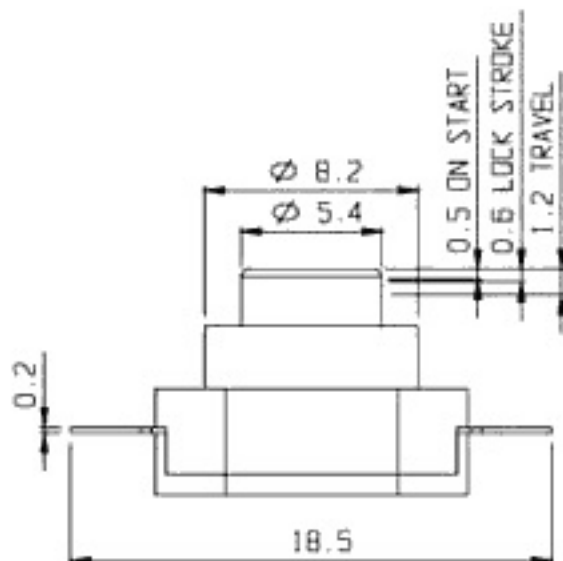


SCHEMATIC



RoHS  
Compliance



7	CONTACT	BRASS	1	Ag PLATED	8	CONTACT1	SPCC	1	Ni PLATED
5	TERMINAL	BRASS	2	Ag PLATED	6	SPRING	STEEL WIRE	2	
3	KNOB2	P O M	1		4	COVER	NYLON	1	
1	FRAME	NYLON	1		2	KNOB1	P O M	1	
NO	PART	MATERIAL	QTY	REMARKS	NO	PART	MATERIAL	QTY	REMARKS

ISSUED

SPECIFICATION

TITLE: PUSH SLIDE SWITCH  
(LOCK)

RATING: DC 30V 0.1A  
 CONTACT RESISTANCE: 70mΩ max.  
 INSULATION RESISTANCE: 100MΩ at 500V DC  
 WITHSTAND VOLTAGE: AC 250V for 1 minute.  
 OPERATION FORCE: REFER ATTACH SPECIFICATION  
 SWITCHING LIFE: 10K cycles min.

MODEL NO: PS-11B02L

TOLERANCE UNIT: MM  
 UP TO 1.0:±0.1 SCALE: 4:1  
 1.0 TO 10.0:±0.2 VERSION: 01  
 OVER 10.0:±0.3 DRWG NO:

DWN.  
 CHK'D.  
 APPD.

