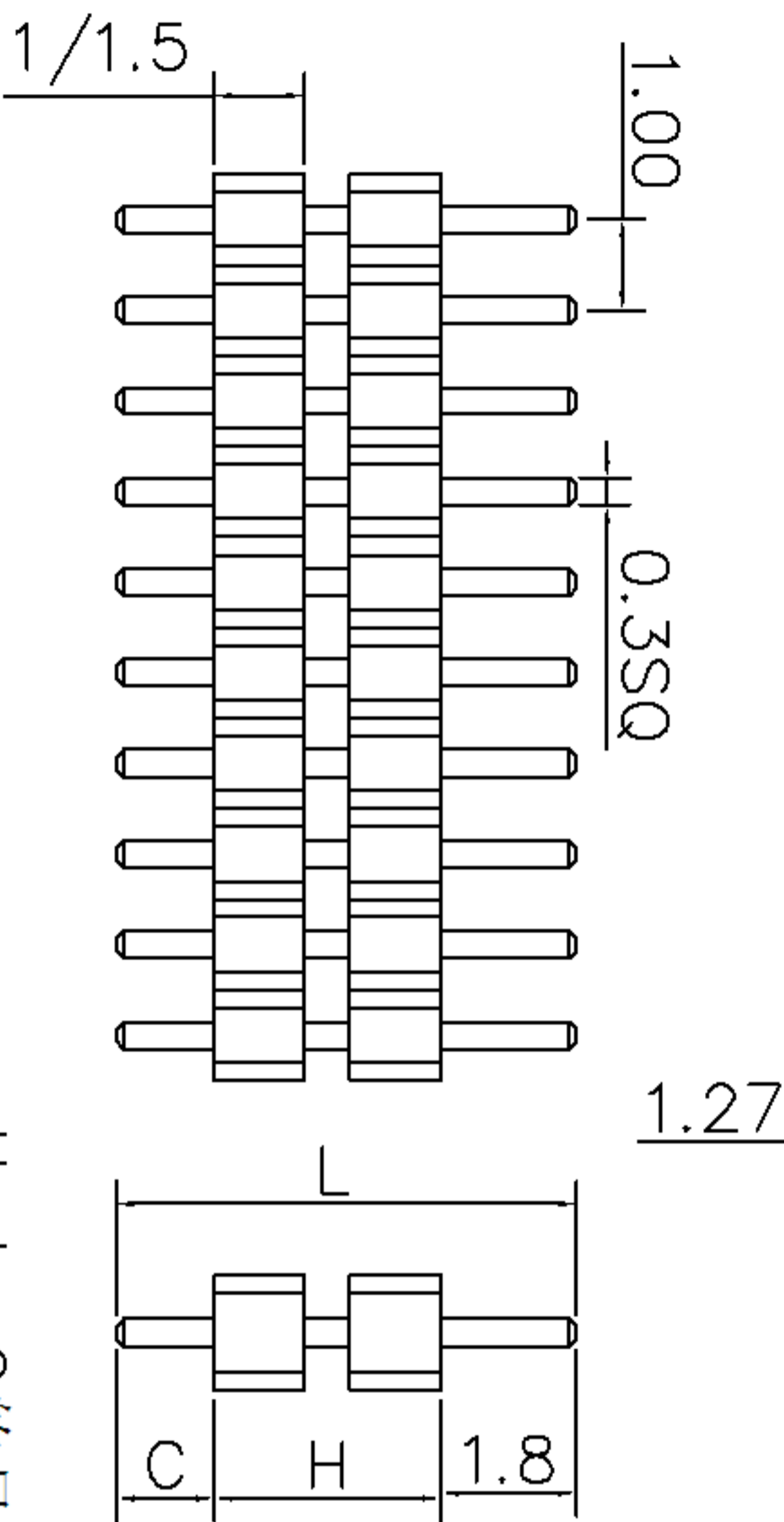
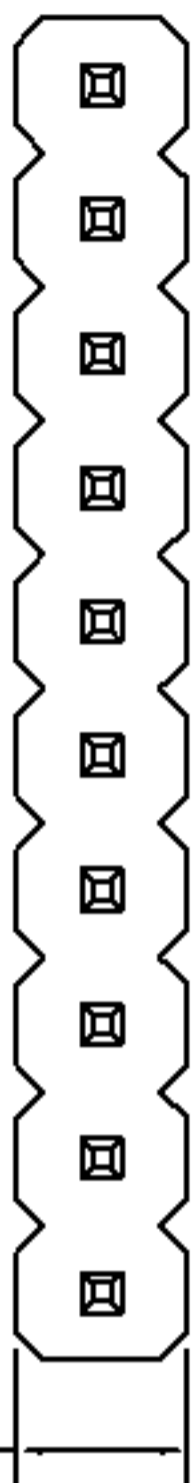


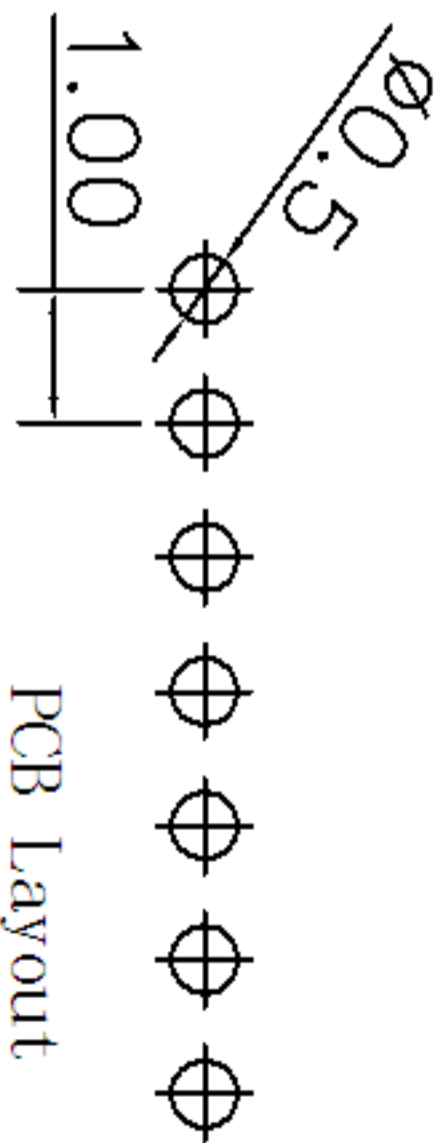
A	新版图	/	LZW
		2012.05.23	



H、L、C的尺寸
可依客户要求订做

Technical Data:
 Material: Brass
 Contact Material: Brass
 Insulator Material: PA6T+30%GF
 Electrical:
 Current rating: 0.75 Amps/Contact max.
 Contact resistance: ≤ 20 mohms/Contact
 Insulation resistance: ≥ 1000 Mohms at $V=100V$
 Withstanding Voltage: 300V AC/Minute
 Mechanical:
 Operating Temperature: Gold plated -55° C $\sim 105^{\circ}$ C
 Tin plated -40° C $\sim 105^{\circ}$ C
 Soldering Temperature: 260° C 10s Max.

1101-400S21XX-H-L
 1.00PIN距双塑胶单
 推直插排针系列
 每排PIN数
 塑高
 总高



PCB Layout

TOLERANCE		DRAWN	DATE	武汉宇恒电子有限公司 WUHAN YUHENG ELECTRONIC CO., LTD
ON	ANGLE	LZW	2012.05.23	
.XXX±	0.05	CHECKED	DATE	TITLE:
XX±	0.15	CLIENT APPROVED	DATE	排针系列-1.00 PIN距-单排-双塑形
X+	0.20	DATE		REQ NO
X±	0.30			CLIENT P/N
				UNIT: mm
				SCALE: free
				FILE NO.: YH20120601A008