

REV	MODIFICATION	DATE	DRAW	APPROVE
A	NEW DWG	2007.07.04	HUANG	KEVIN

NOTES

1: MATERIAL:

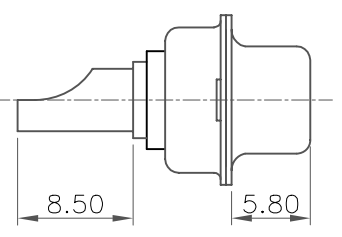
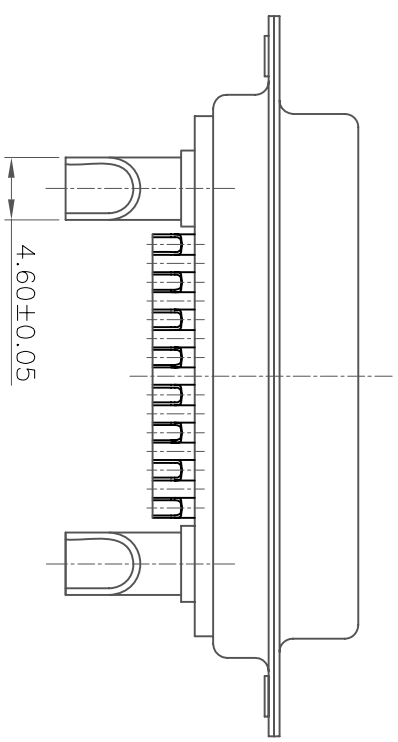
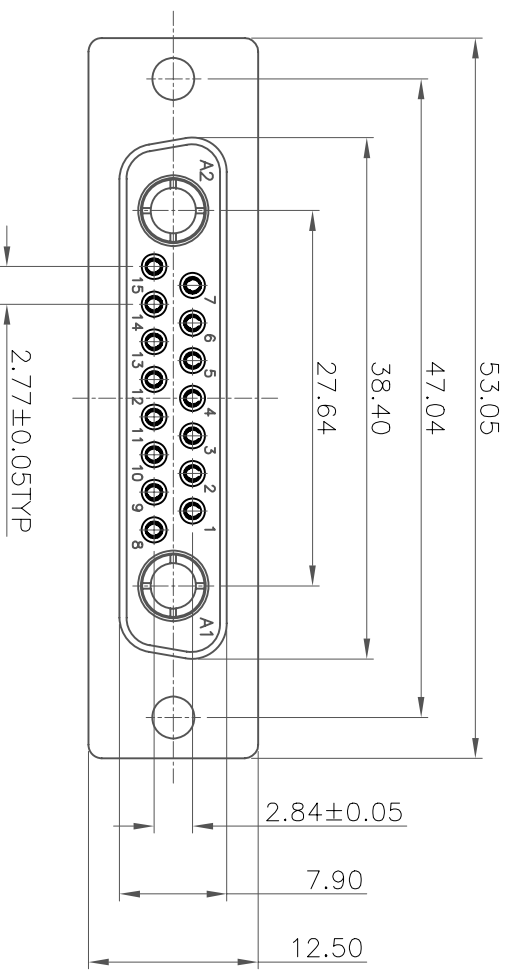
SHELL: STEEL  
 HOUSING: PBT+30%G.F, BLACK, UL94V-0  
 CONTACT: PHOSPHOR BRONZE

2: FINISH:

SHELL: NICKEL PLATING  
 CONTACT PLATING: GOLD PLATING

3: SPECIFICATION:

CURRENT RATING: 40A  
 VOLTAGE RATING: 300V  
 CONTACT RESISTANCE: 10mΩ  
 WITHSTANDING VOLTAGE: 1000V  
 INSULATION RESISTANCE: 5000MΩ  
 OPERATING TEMPERATURE: -55°C~105°C



-TOLERANCES-		UNLESS OTHERWISE SPECIFIED	
X.X	±0.30	X.X°	±3°
X.XX	±0.15	X.XX°	±1°
X.XXX	±0.10	X.XXX°	±0.5°



TITLE: 17W2 FEMALE 焊线式成品

APPD: KEVIN  
 PRODUCT NO: 131-017FPXMK01

CHECK: TENA  
 DATE: 2007.07.04  
 SCALE: UNIT: MM

DRAW: HUAN  
 FRBE: MM  
 TYPE: Y  
 PAGE: 1/1