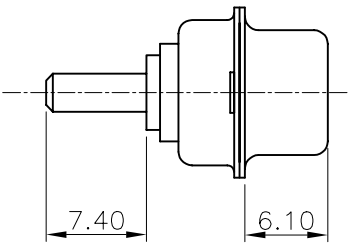
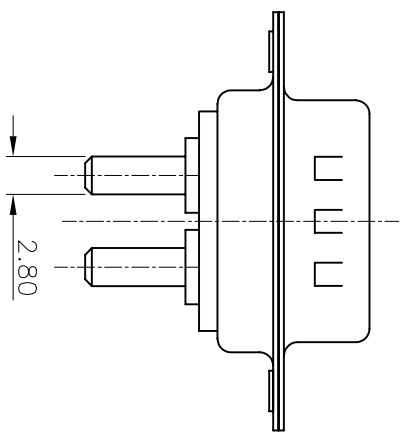
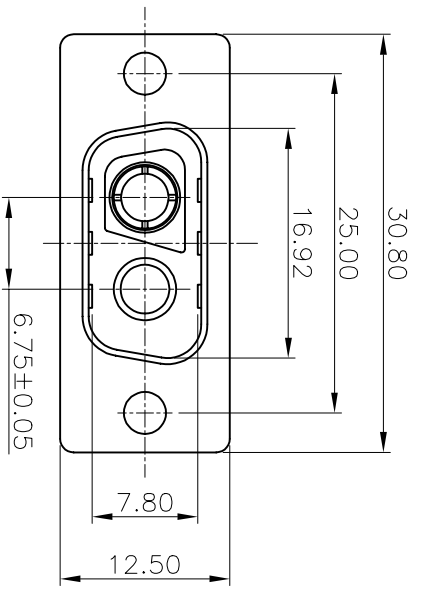


REV	MODIFICATION	DATE	DRAW	APPROVE
A	NEW DWG	2007.07.10	HUANG	KEVIN

NOTES  
1: MATERIAL:  
SHELL: SPCC  
HOUSING: PBT+30%G.F, BLACK, UL94V-0  
CONTACT: BRASS or PHOSPHOR BRONZE  
2: FINISH:  
SHELL: NICKEL PLATING  
CONTACT PLATING: GOLD PLATING  
3: SPECIFICATION:  
CURRENT RATING: 40A  
VOLTAGE RATING: 300V  
CONTACT RESISTANCE: 10mΩ  
WITHSTANDING VOLTAGE: 1000V  
INSULATION RESISTANCE: 5000MΩ  
OPERATING TEMPERATURE: -55°C~105°C



-TOLERANCES-		UNLESS OTHERWISE SPECIFIED	
X.X	±0.30	X.X°	±3°
X.XX	±0.15	X.XX°	±1°
X.XXX	±0.10	X.XXX°	±0.5°



APPD: KEVIN  
CHECK: TENA  
DRAW: HUANG

TITLE: 2V2 MALE 插板成品(一公一母)  
PRODUCT NO: 133-002MBXMK02

DATE	SCALE	UNIT	TYPE	PAGE
2007.07.10	FREE	MM	Y	1/1