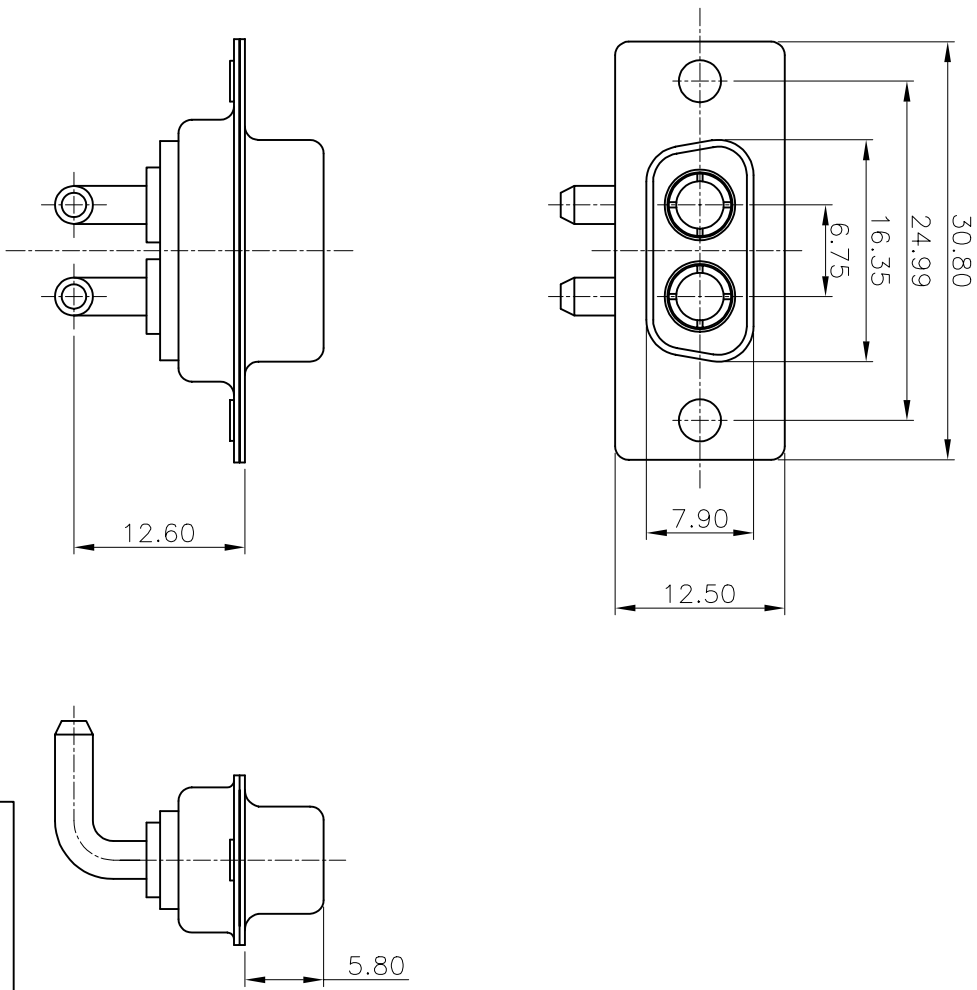


REV	MODIFICATION	DATE	DRAW	APPROVE
A	NEW DWG	2007.07.10	HUANG	KEVIN

NOTES

- 1: MATERIAL:
SHELL: STEEL
HOUSING: PBT+30%G.F, BLACK, UL94V-0
CONTACT: PHOSPHOR BRONZE
- 2: FINISH:
SHELL: NICKEL PLATING
CONTACT PLATING: GOLD PLATING
- 3: SPECIFICATION:
CURRENT RATING: 40A
VOLTAGE RATING: 300V
CONTACT RESISTANCE: 10m Ω
WITHSTANDING VOLTAGE: 1000V
INSULATION RESISTANCE: 5000M Ω
OPERATING TEMPERATURE: -55°C~105°C



-TOLERANCES-
UNLESS OTHERWISE SPECIFIED

X.X	± 0.30	X.X°	$\pm 3^\circ$			TITLE: 2W2 FEMALE 折弯成品			
X.XX	± 0.15	X.XX°	$\pm 1^\circ$	APPD: KEVIN	CHECK: TENA	PRODUCT NO: 134-002FPXMK01			
X.XXX	± 0.10	X.XXX°	$\pm 0.5^\circ$	DRAW: HUANG	DATE: 2007.07.10	SCALE	UNIT	TYPE	PAGE
					FRBE	MM	Y	1/1	