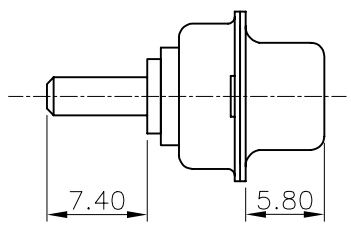
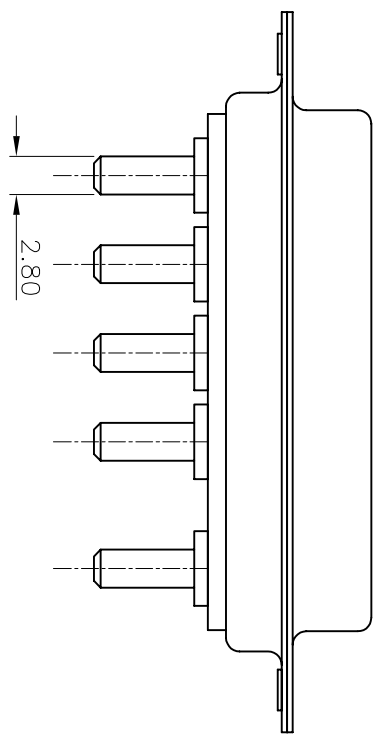
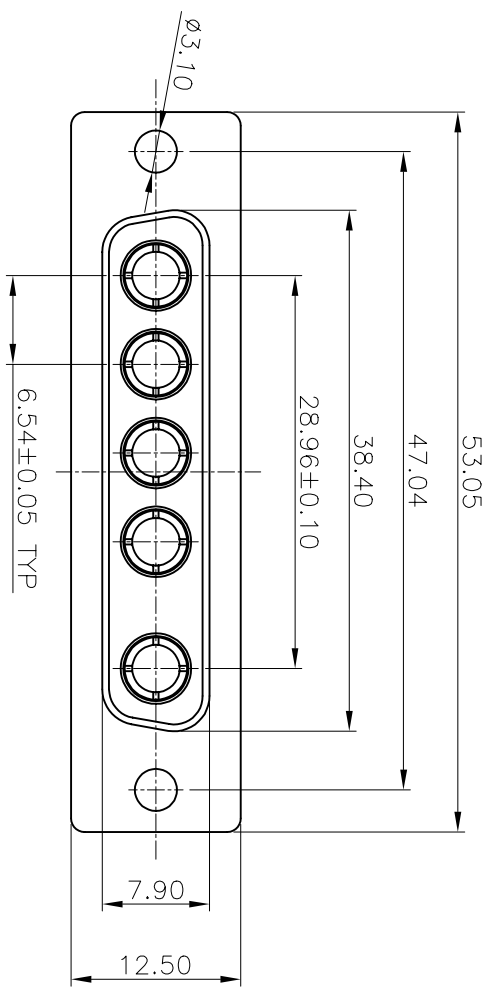


REV	MODIFICATION	DATE	DRAW	APPROVE
A	NEW DWG	2007.07.04	HUANG	KEVIN

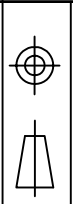
NOTES

- 1:MATERIAL:  
SHELL: STEEL  
HOUSING: PBT+30%G.F, BLACK, UL94V-0  
CONTACT: PHOSPHOR BRONZE
- 2:FINISH:  
SHELL: NICKEL PLATING  
CONTACT PLATING: GOLD PLATING
- 3:SPECIFICATION:  
CURRENT RATING: 40A  
VOLTAGE RATING: 300V  
CONTACT RESISTANCE: 20m $\Omega$   
WITHSTANDING VOLTAGE:1000V  
INSULATION RESISTANCE: 5000M $\Omega$   
OPERATING TEMPERATURE: -55 $^{\circ}$ C~105 $^{\circ}$ C



-TOLERANCES-  
UNLESS OTHERWISE SPECIFIED

X.X	±0.30	X.X°	±3°
X.XX	±0.15	X.XX°	±1°
X.XXX	±0.10	X.XXX°	±0.5°



TITLE: SW5 FEMALE 插板成品

APPD: KEVIN	PRODUCT NO: 133-005FPXMK01				
CHECK: TENA	DATE	SCALE	UNIT	TYPE	PAGE
DRAW: HUANG	2007.07.04	FRBE	MM	Y	1/1