

REV	MODIFICATION	DATE	DRAW	APPROVE
A	NEW DWG	2007.07.04	HUANG	KEVIN

NOTES

1: MATERIAL:

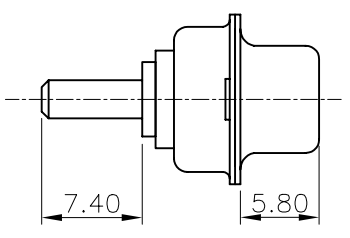
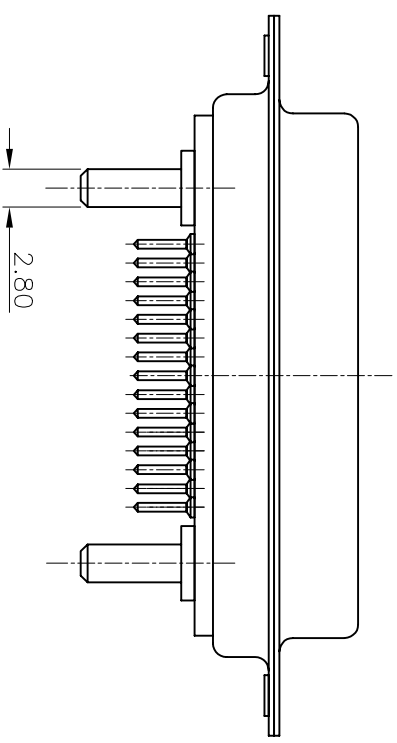
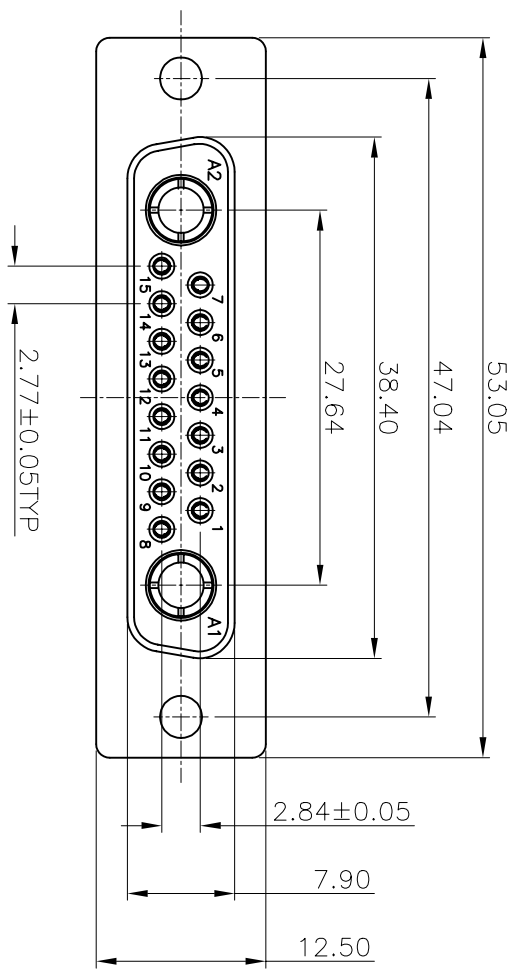
SHELL: STEEL
 HOUSING: PBT+30%G.F, BLACK, UL94V-0
 CONTACT: PHOSPHOR BRONZE

2: FINISH:

SHELL: NICKEL PLATING
 CONTACT PLATING: GOLD PLATING

3: SPECIFICATION:

CURRENT RATING: 7.5A-40A
 VOLTAGE RATING: 300V
 CONTACT RESISTANCE: 10mΩ
 WITHSTANDING VOLTAGE: 1000V
 INSULATION RESISTANCE: 5000MΩ
 OPERATING TEMPERATURE: -55°C~105°C



-TOLERANCES-
 UNLESS OTHERWISE SPECIFIED

X.X	±0.30	X.X°	±3°		TITLE: 17W2 FEMALE 插板成品
X.XX	±0.15	X.XX°	±1°		APPD: KEVIN
X.XXX	±0.10	X.XXX°	±0.5°		CHECK: TENA
					DRAW: HUAN
					PRODUCT NO: 133-017PPXMK01
					DATE
					SCALE
					UNIT
					TYPE
					PAGE
					1/1