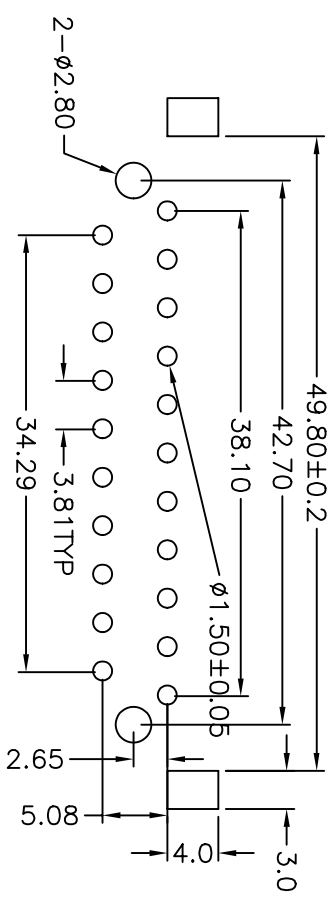
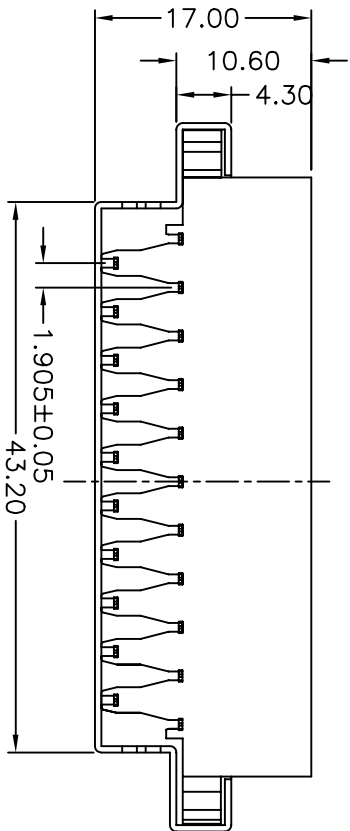
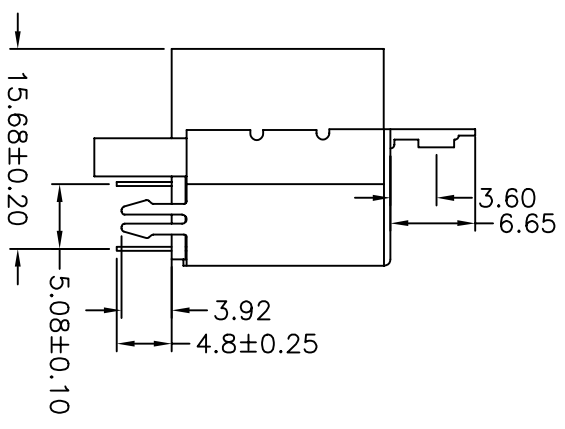
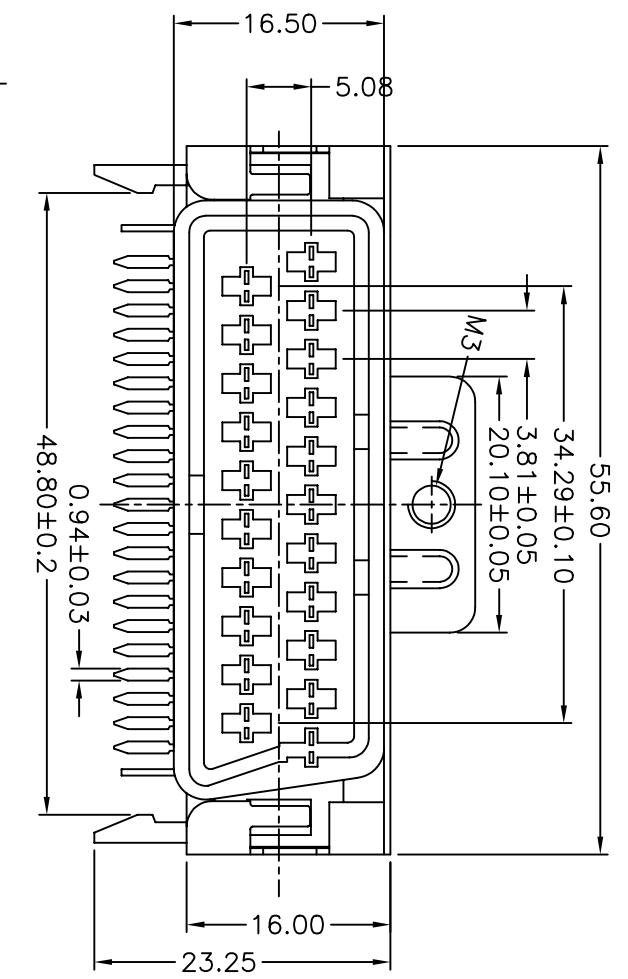


REV.	NOTES	DATE
A	RELEASED	2005/06/09



PCB LAYOUT

- NOTES:
- MATERIALS
    - 1.1 Insulator: Pc
    - 1.2 Contact: Brass
    - 1.3 Contact Plating: Tin Plated
  - SPECIFICATIONS
    - 2.1 Current Rating: 5Amp
    - 2.2 Dielectric Strength: 1000V AC for one minute
    - 2.3 Insulator Resistance: 5000M $\Omega$  Min. (at 500V DC)
    - 2.4 Operation Temperature: -55 $^{\circ}$ C to +105 $^{\circ}$ C

DIMENSIONS TOLERANCE		METRIC	
0 = ±.3		0 = ±.3	
.000 = ±.20		.000 = ±.20	
.0000 = ±.XXX		.0000 = ±.XXX	
ANG. = ±2 $^{\circ}$		ANG. = ±2 $^{\circ}$	

單位 (UNITS)	mm	圖名 (NAME)	90度母座有柱有孔錫反向 PC 無毒 有凸點加鐵線M3
數量 (QTY)	N/A	料號 (PART NUMBER)	ASC+0350-40C11
材料 (MTR'L)	SEE NOTE	圖號 (DRAW NUMBER)	RASC035040C11
處理 (FINISH)	SEE NOTE	圖檔 (FILE NAME .DWG)	E:GCT/A/SC/03
繪圖 (DRAW)		比例 (SCALE)	1/1
設計 (DE'N)		圖紙 (SHEET)	A4
審核 (CHK)		頁次 (SHEET)	1
核准 (APP'D)		版本 (REV.)	A