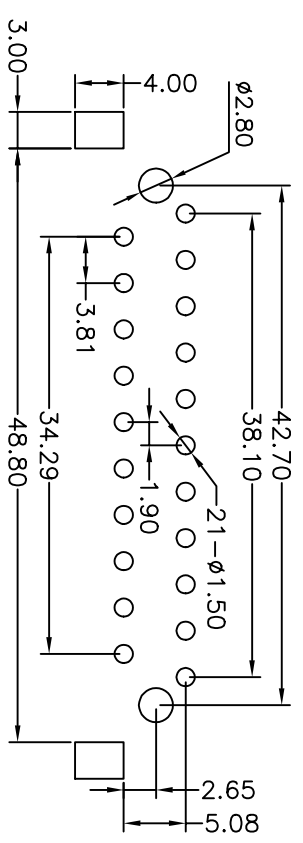
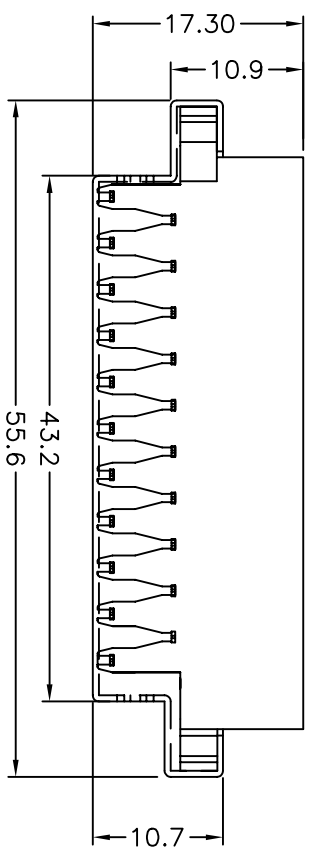
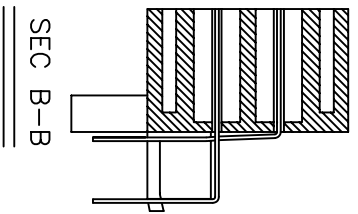
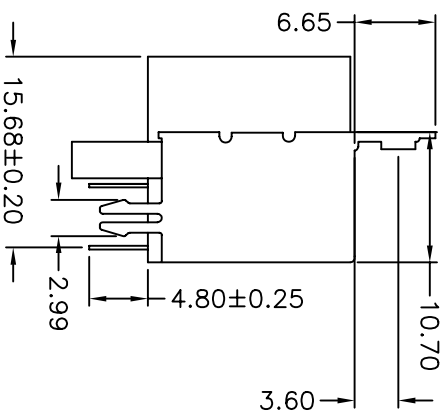
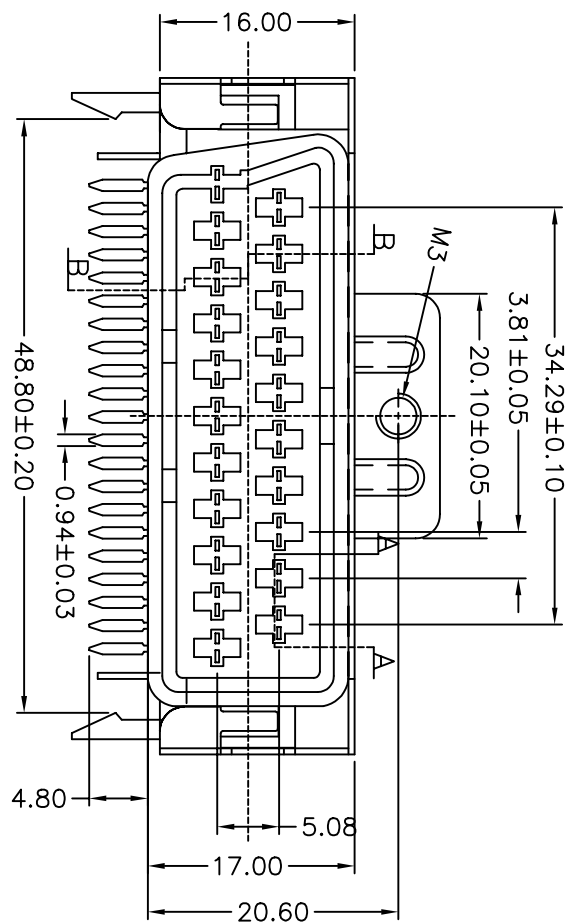
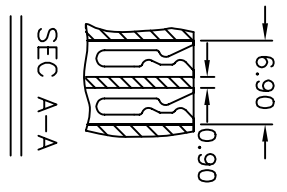


REV.	NOTES	DATE
A	RELEASED	2006/08/05



RECOMMEND P.C. BOARD LAYOUT

- NOTES:
1. MATERIALS
 - 1.1 Insulator: Pc or PBT
 - 1.2 Contact: Brass 0.2T
 - 1.3 Material sheel: SPCC 0.5T
 - 1.4 Contact Plating: TIN Plated
 2. SPECIFICATIONS
 - 2.1 Current Rating: 5Amp
 - 2.2 Dielectric Strength: 1000V AC for one minute
 - 2.3 Insulator Resistance: 5000M Ohms Min.(at 500V DC)
 - 2.4 Operation Temperature: -55°C to +105°C



DIMENSIONS TOLERANCE

METRIC

0 = ±.3
 .00 = ±.15
 .0000 = ±.XXX
 ANG. = ±2'

單位 (UNITS)	mm
數量 (QTY)	N/A
材料 (MTR'L)	SEE NOTE
處理 (FINISH)	SEE NOTE
繪圖 (DRAW)	
設計 (DE'N)	
審核 (CHK'K)	
核准 (APP'D)	

圖名 (NAME)	90度母座有柱有孔錫 PC加鐵殼(有凸)加大8牙無毒	
料號 (PART NUMBER)	ASC+0350-40CT	
圖號 (DRAW NUMBER)	RASC035040CT	
圖檔 (FILE NAME .DWG)	E:GCT/A/SC/03	
比例 (SCALE)	1/1	
圖紙 (SHEET)	A4	
頁次 (SHEET)	1	
版本 (REV.)	A	