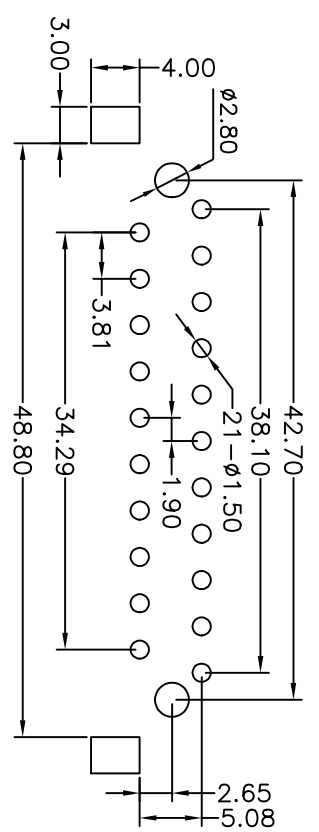
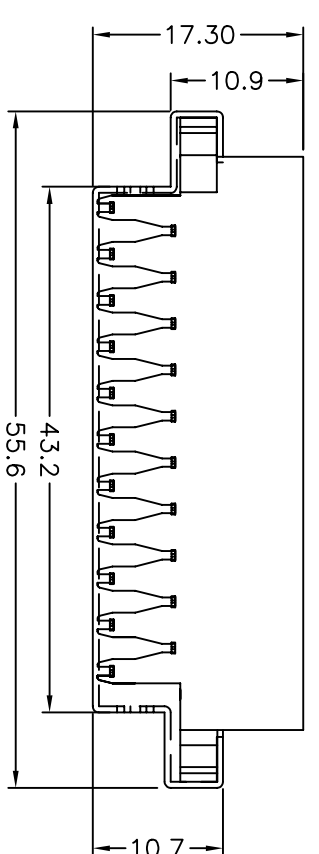
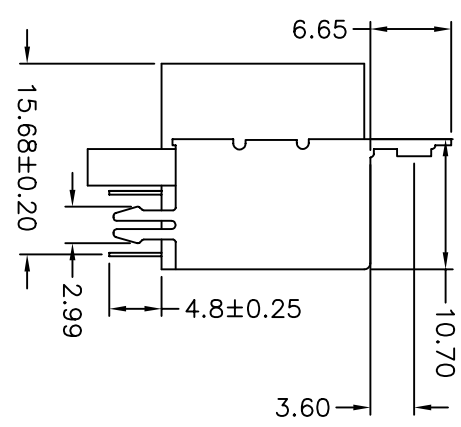
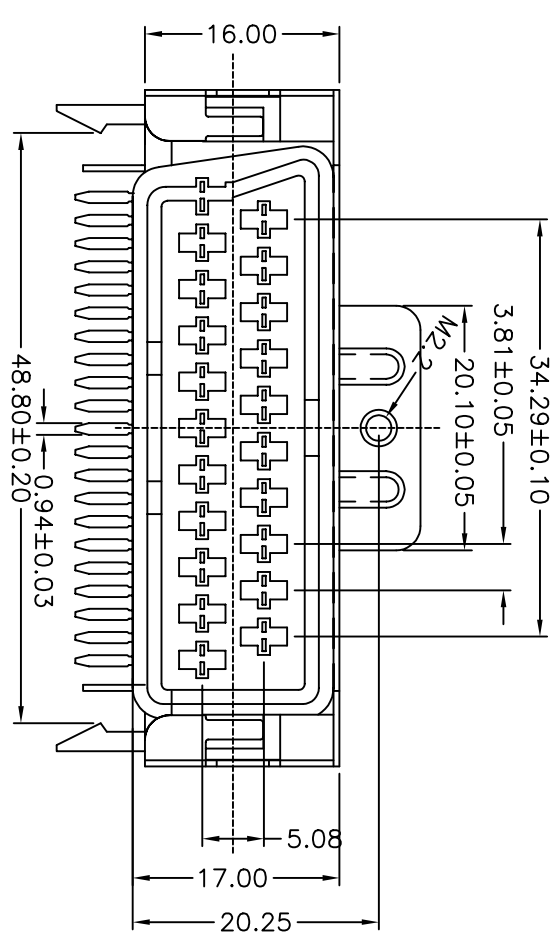


REV.	NOTES	DATE
A	RELEASED	2004/09/02



RECOMMEND P.C. BOARD LAYOUT

- NOTES:
1. MATERIALS
    - 1.1 Insulator: Pc
    - 1.2 Contact: Brass 0.3T
    - 1.3 Material sheet: SPCC 0.4T
    - 1.4 Contact Plating: TIN Plated
  2. SPECIFICATIONS
    - 2.1 Current Rating: 5Amp
    - 2.2 Dielectric Strength: 1000V AC for one minute
    - 2.3 Insulator Resistance: 5000M Ohms Min.(at 500V DC)
    - 2.4 Operation Temperature: -55°C to +105°C

DIMENSIONS TOLERANCE		METRIC	
		0 = ±.3	
		.00 = ±.15	
		.0000 = ±.0005	
		ANG. = ±2°	
單位 (UNITS)	mm	設計 (DE' N)	
數量 (QTY)	N/A	審核 (CHK)	
材料 (M'T'L)	SEE NOTE	核准 (APP' D)	
處理 (FINISH)	SEE NOTE	圖名 (NAME) 90度母座有柱有孔錫 PC加鍍銀(有凸)無毒 Ø2.2機械牙	
繪圖 (DRAW)		料號 (PART NUMBER)	ASC+0350-40CK4
		圖號 (DRAW NUMBER)	RASC035040CK4
		圖檔 (FILE NAME .DWG)	E:GGT/A/SC/03
		比例 (SCALE)	1/1
		圖紙 (SHEET)	A4
		頁次 (SHEET)	1
		版次 (REV.)	A