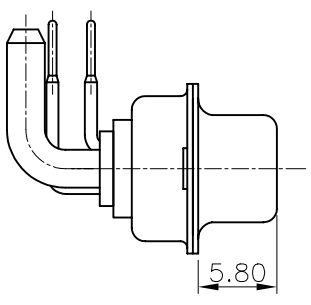
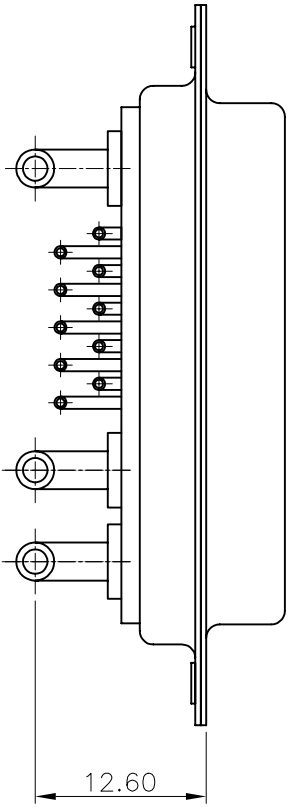
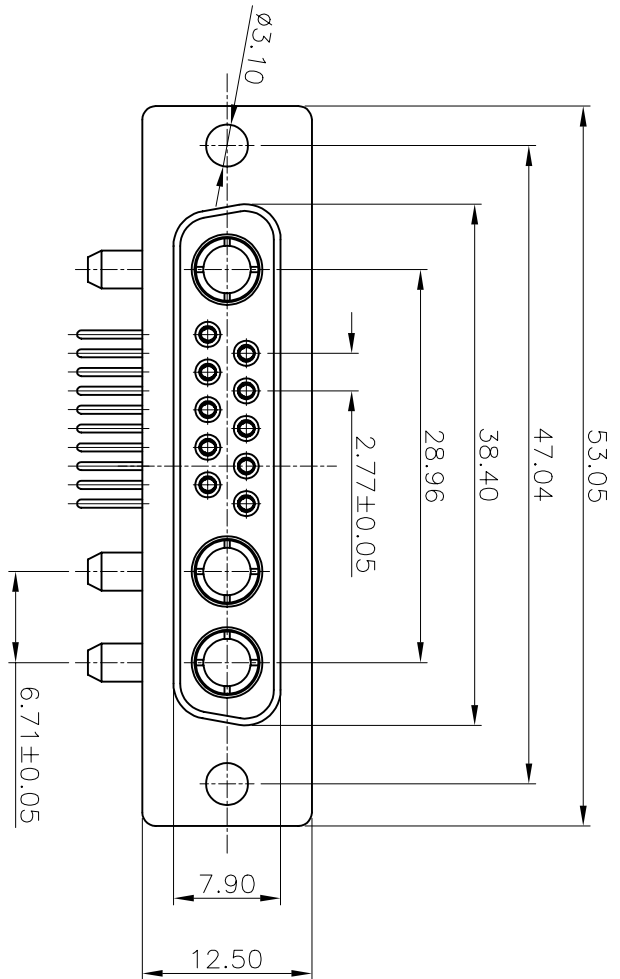


REV	MODIFICATION	DATE	DRAW	APPROVE
A	NEW DWG	2007.07.04	HUANG	KEVIN



NOTES

1:MATERIAL:
SHELL: STEEL
HOUSING: PBT+30%GF, BLACK, UL94V-0
CONTACT: PHOSPHOR BRONZE

2:FINISH:
SHELL: NICKEL PLATING
CONTACT PLATING: GOLD PLATING

3:SPECIFICATION:
CURRENT RATING: 7.5A-40A
VOLTAGE RATING: 300V
CONTACT RESISTANCE: 20mΩ
WITHSTANDING VOLTAGE:1000V
INSULATION RESISTANCE: 5000MΩ
OPERATING TEMPERATURE: -55°C~105°C

-TOLERANCES-
UNLESS OTHERWISE SPECIFIED



TITLE:J3W3 FEMALE 折弯成品

X.X	±0.30	X.X°	±3°	APPD: KEVIN	PRODUCT NO: 134-013PPXMK01	
X.XX	±0.15	X.XX°	±1°	CHECK: TENA	DATE	SCALE
X.XXX	±0.10	X.XXX°	±0.5°	DRAW: HUANG	2007.07.04	UNIT
					FREE	MM
						Y
						PAGE
						1/1