

REV	MODIFICATION	DATE	DRAW	APPROVE
A	NEW DWG	2007.07.04	HUANG	KEVIN

NOTES

1:MATERIAL:

SHELL: STEEL

HOUSING: PBT+30%G.F, BLACK, UL94V-0

CONTACT: PHOSPHOR BRONZE

2:FINISH:

SHELL: NICKEL PLATING

CONTACT PLATING: GOLD PLATING

3:SPECIFICATION:

CURRENT RATING: 7.5A-40A

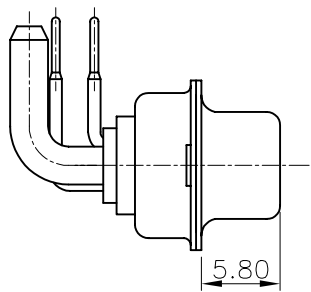
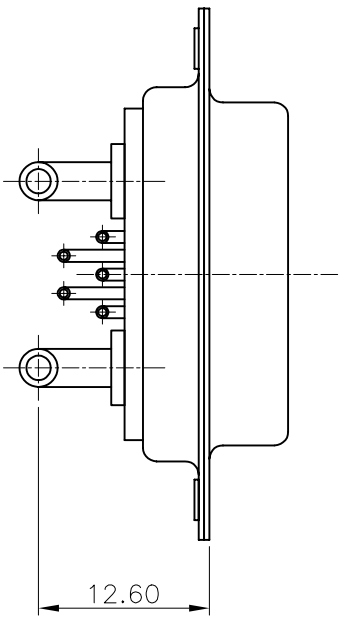
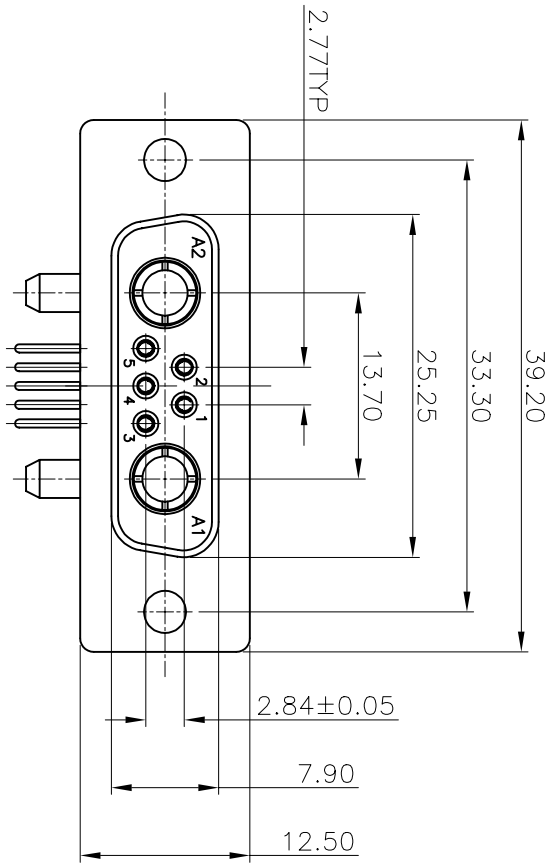
VOLTAGE RATING: 300V

CONTACT RESISTANCE: 10mΩ

WITHSTANDING VOLTAGE: 1000V

INSULATION RESISTANCE: 5000MΩ

OPERATING TEMPERATURE: -55°C~105°C



-TOLERANCES-		UNLESS OTHERWISE SPECIFIED	
X.X	±0.30	X.X°	±3°
X.XX	±0.15	X.XX°	±1°
X.XXX	±0.10	X.XXX°	±0.5°



TITLE: 7W2 FEMALE 折弯成品

APPD: KEVIN

PRODUCT NO: 134-007FPXMK01

CHECK: TENA

DATE	SCALE	UNIT	TYPE	PAGE
2007.07.04	FREE	MM	Y	1/1

DRAW: HUANG

1	2	3	4	5	6	7	8	9	10
---	---	---	---	---	---	---	---	---	----