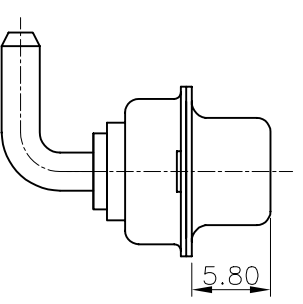
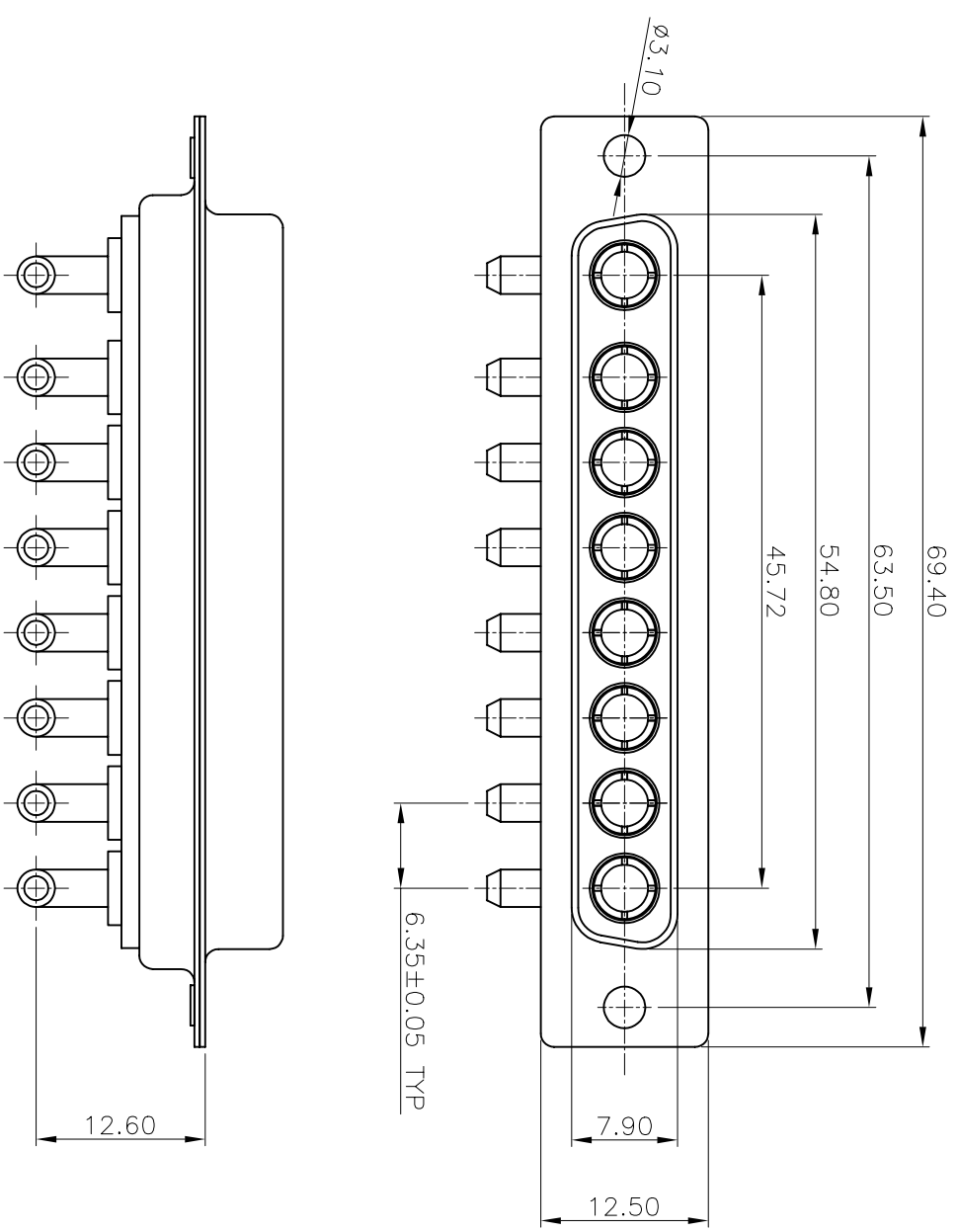


REV	MODIFICATION	DATE	DRAW	APPROVE
A	NEW DWG	2007.07.04	HUANG	KEVIN

NOTES

- 1: MATERIAL:  
SHELL: STEEL  
HOUSING: PBT+30%G.F, BLACK, UL94V-0  
CONTACT: PHOSPHOR BRONZE
- 2: FINISH:  
SHELL: NICKEL PLATING  
CONTACT PLATING: GOLD PLATING
- 3: SPECIFICATION:  
CURRENT RATING: 40A  
VOLTAGE RATING: 300V  
CONTACT RESISTANCE: 20mΩ  
WITHSTANDING VOLTAGE: 1000V  
INSULATION RESISTANCE: 5000MΩ  
OPERATING TEMPERATURE: -55°C~105°C



-TOLERANCES-		UNLESS OTHERWISE SPECIFIED	
X.X	±0.30	X.X'	±3°
X.XX	±0.15	X.XX'	±1°
X.XXX	±0.10	X.XXX'	±0.5°

		TITLE: 8W8 FEMALE 折弯成品
--	--	------------------------

APPD:	KEVIN	PRODUCT NO:	134-008FPXMK01
CHECK:	TENA	DATE:	2007.07.04
DRAW:	HUANG	SCALE:	FRBE
		UNIT:	MM
		TYPE:	Y
		PAGE:	1/1