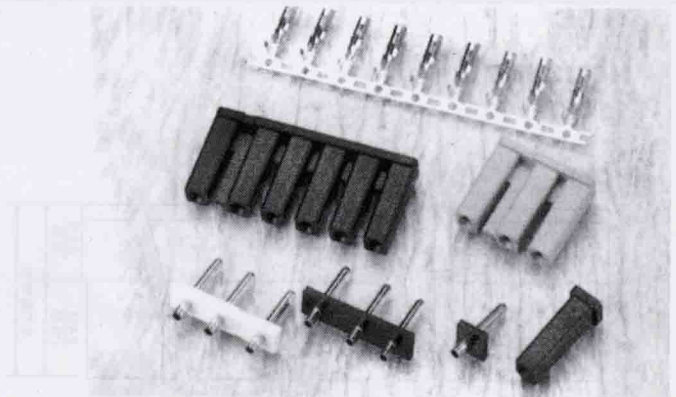


# Disconnectable Connectors for Pins 0.315" (8.00mm) in Diameter

1123 Series

## SPECIFICATION

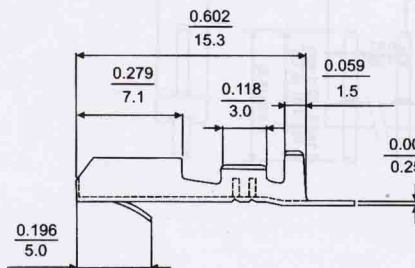
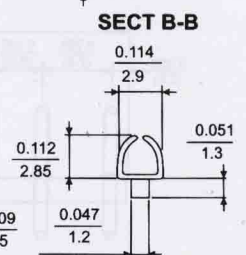
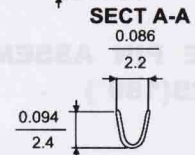
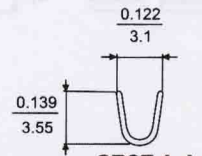
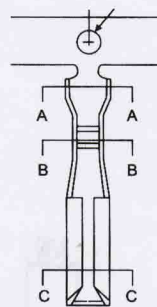
Poles: 1-6  
 Voltage rating: AC, DC 250V  
 Current rating: AC, DC, 5A  
 Withstand voltage: 1500V AC/min.  
 Insulation resistance: 1000M  $\Omega$  /min.  
 Temperature range: -25°C ~ +85°C  
 Applicable PC board thickness: 0.063" (1.6mm)  
 Contact resistance: Initial value/10m  $\Omega$  max.  
 After environmental testing/20m  $\Omega$  max.



## TERMINAL

Part No: 1123T  
 Applicable wires: AWG#18-26  
 Material: Brass  
 Finish: Tin/plated  
 Hardness: H  
 Thickness: 0.25mm

## TERMINAL 1123T



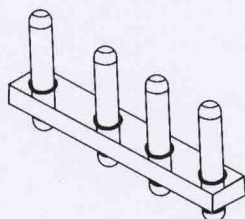
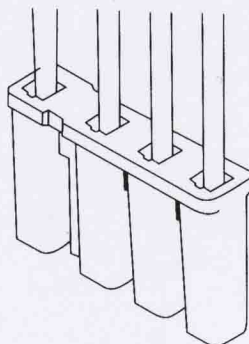
## HOUSING

Part No: 1123H  
 Poles: 1-6  
 Material: Nylon 66, UL 94V-0

## WAFER

Part No: 1123S(180°)  
 Poles: 1-16  
 Material: Post: Brass, Tin/plated  
 Base: PBT or Nylon 66, UL 94V-0

Dimension:  $\frac{\text{Inch}}{\text{mm}}$



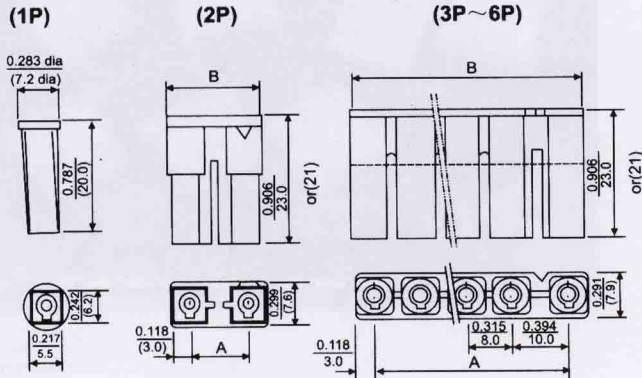
PRINTED CIRCUIT BOARD LAYOUT AND ASSEMBLY LAYOUT



# Disconnectable Connectors for Pins 0.315" (8.00mm) in Diameter

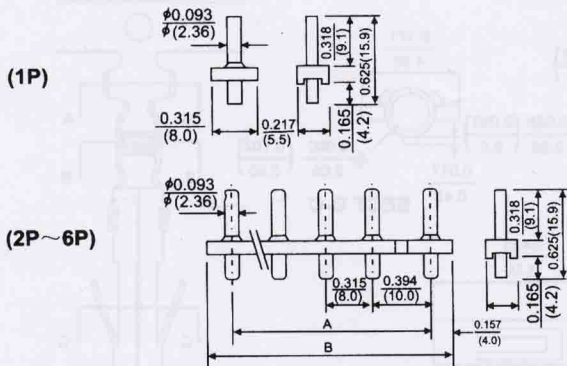
1123 Series

## HOUSING 1123H



POLES	PART NO.	Dimension in.(mm)	
		A	B
1	1123H-1P		
2	1123H-2P	0.394(10.0)	0.630(16.0)
3	1123H-3P	0.709(18.0)	0.945(24.0)
4	1123H-4P	1.024(26.0)	1.260(32.0)
5	1123H-5P	1.393(34.0)	1.575(40.0)
6	1123H-6P	1.654(42.0)	1.890(48.0)

## BASE PIN ASSEMBLY 1123S(180°)



POLES	PART NO.	Dimension in.(mm)	
		A	B
1	1123S-1P		0.315(8.0)
2	1123S-2P	0.394(10.0)	0.709(18.0)
3	1123S-3P	0.709(18.0)	1.024(26.0)
4	1123S-4P	1.024(26.0)	1.339(34.0)
5	1123S-5P	1.393(34.0)	1.654(42.0)
6	1123S-6P	1.654(42.0)	1.969(50.0)

## PRINTED CIRCUIT BOARD LAYOUT AND ASSEMBLY LAYOUT

