

0.039" (1.00mm) WIRE TO BOARD CONNECTOR

JST-SH Series

Specifications

Current rating: 1A, AC, DC

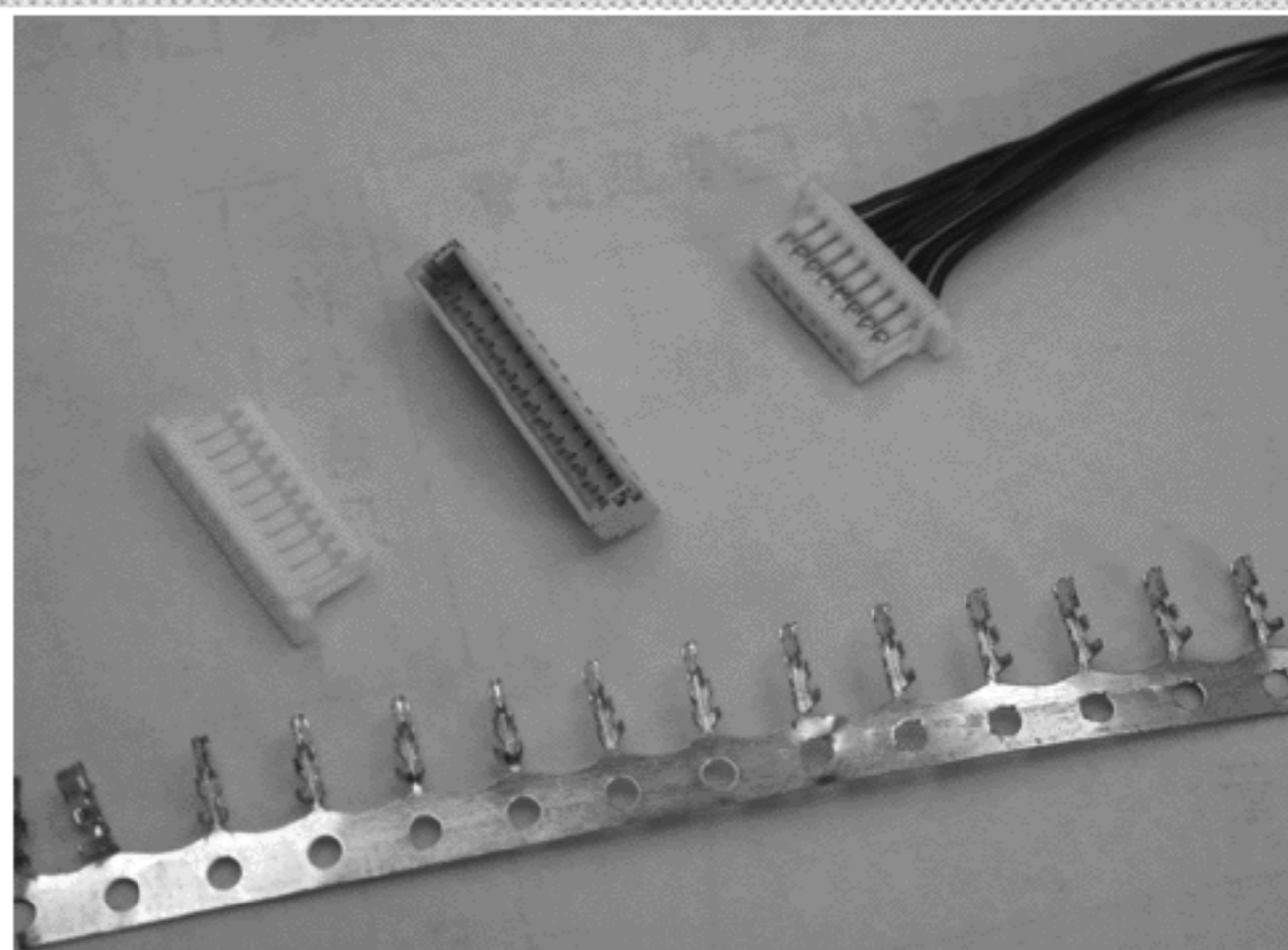
Voltage rating: 50V AC, DC

Insulation resistance: 100MΩ min

Withstanding Voltage: 500V AC/minute

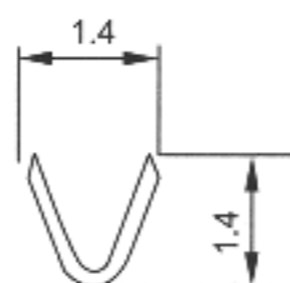
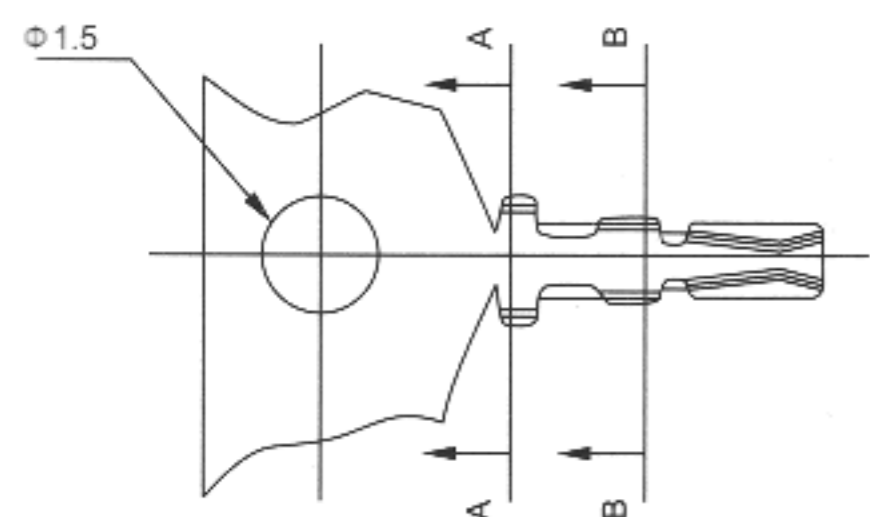
Temperature range: -25°C - +85°C

Contact resistance 20MΩ max

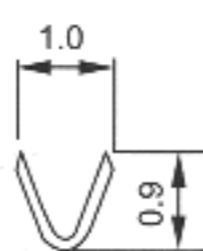
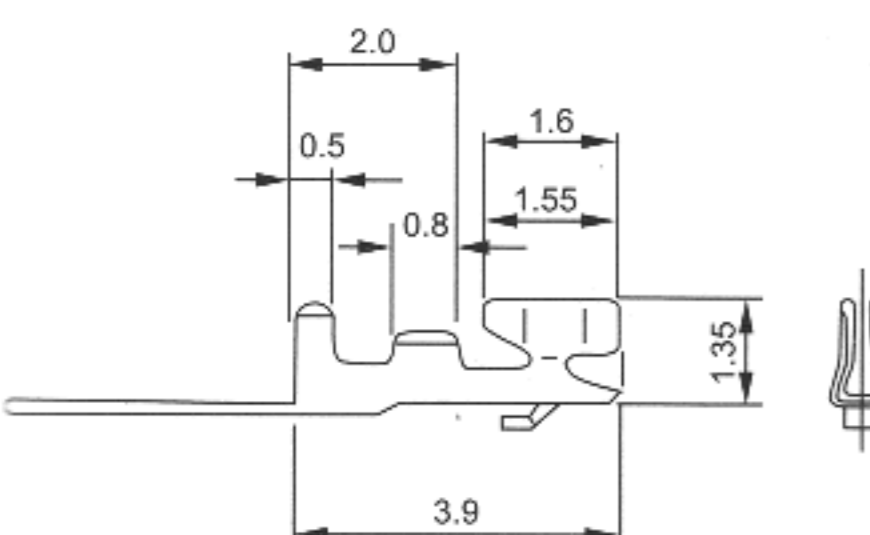


Ordering Information

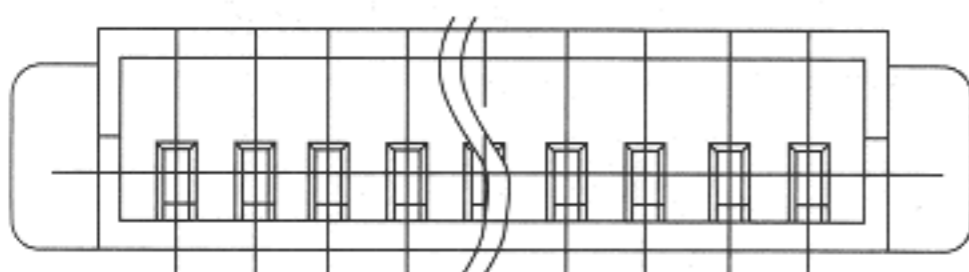
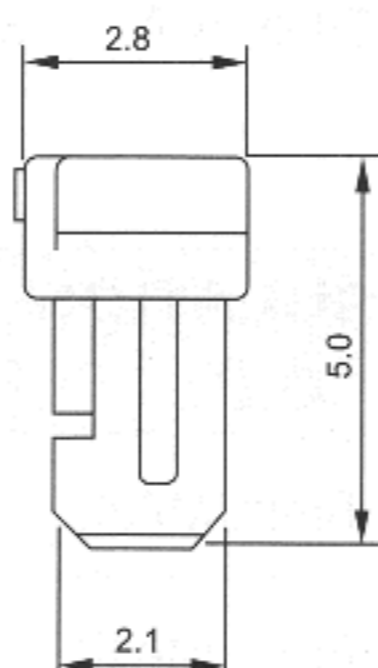
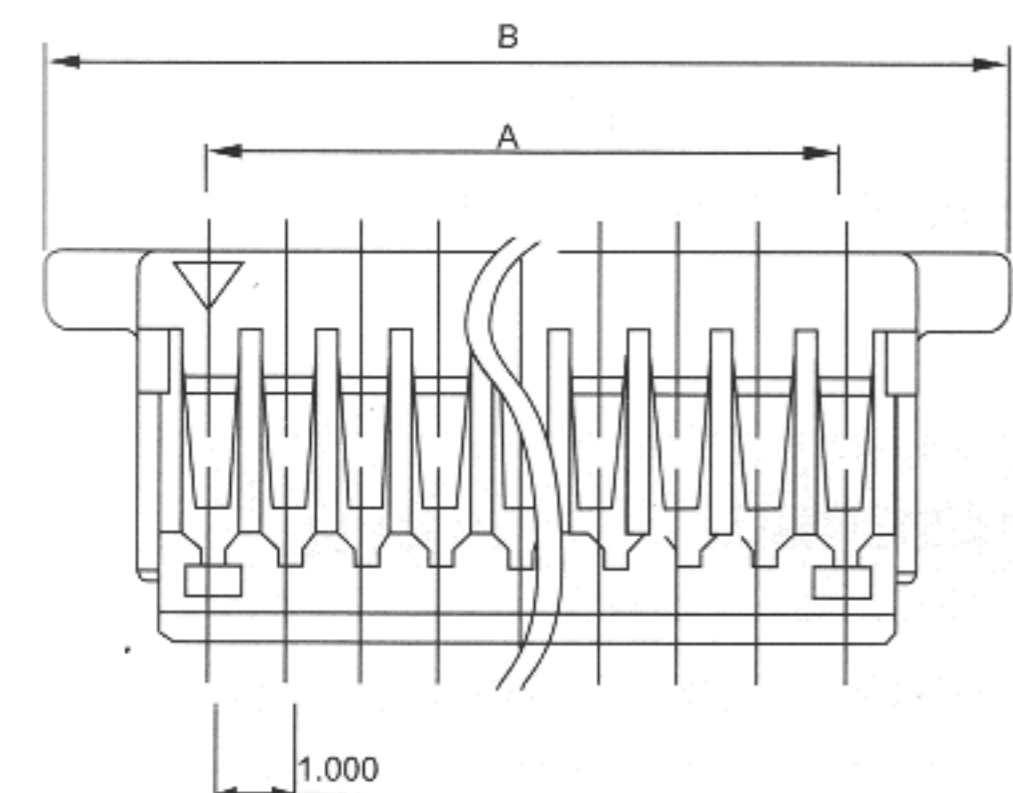
Part No	Wire Range	Insulation O.D.	Material	Finish	Q'ty/roll	Note
SH-T-P	AWG#28-#32	0.8mm(max)	Phosphor bronze	Tin-Plated	10,000pcs	
SH-G-P	AWG#28-#32	0.8mm(max)	Phosphor bronze	Gold	10,000pcs	



A-A SECTION



B-B SECTION



PART NO.	DIMENSION.	
	A	B
2	1.00	5.00
3	2.00	6.00
4	3.00	7.00
5	4.00	8.00
6	5.00	9.00
7	6.00	10.00
8	7.00	11.00
9	8.00	12.00
10	9.00	13.00
11	10.00	14.00
12	11.00	15.00
13	12.00	16.00
14	13.00	17.00
15	14.00	18.00
16	15.00	19.00
17	16.00	20.00
18	17.00	21.00
19	18.00	22.00
20	19.00	23.00