

SERIAL ATA CONNECTOR

SATA Series

Material

Housing: SPS or LCP, UL 94V-0

Color: Black.

Contact: Phosphor Bronze

Plating: Gold plating over Nickel on contact area; Tin/Lead plating on terminal.

Mechanical

Insertion Force: 45N max.

Withdrawal Force: 10N max.

Durability: 500 cycles

Electrical Specification

Operation Voltage: 100 VAC max.

Current Rating: 1.5 A

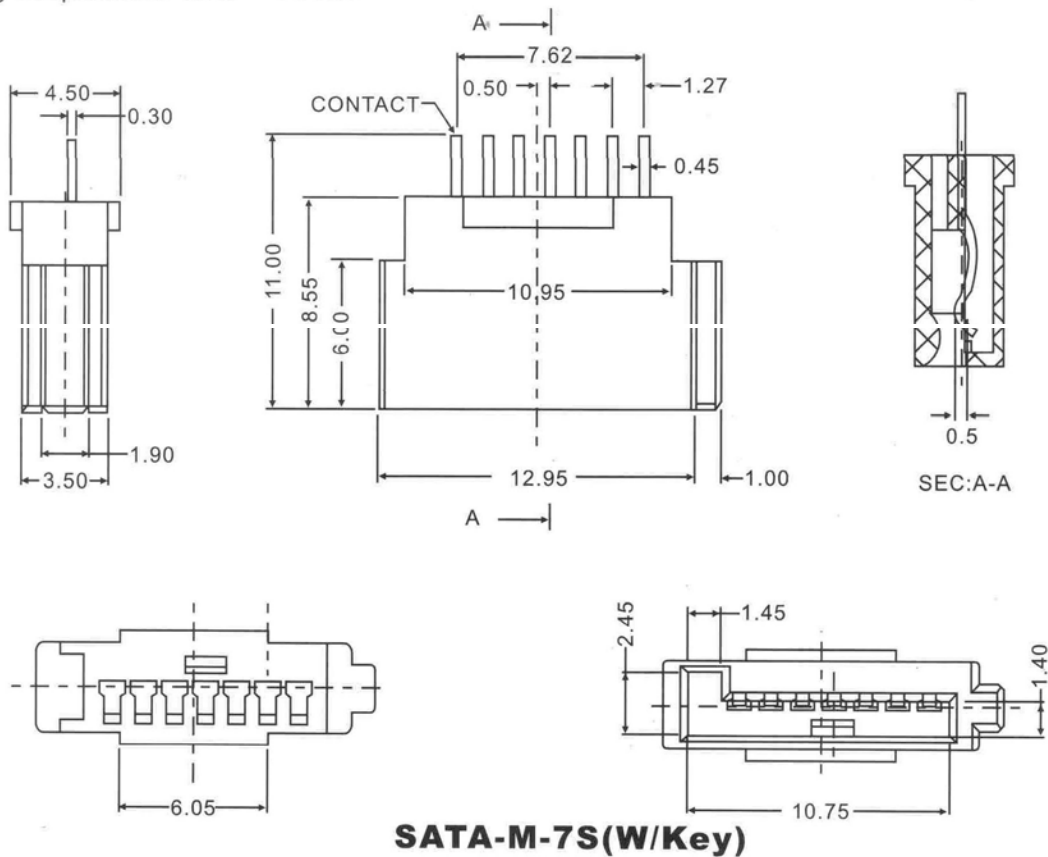
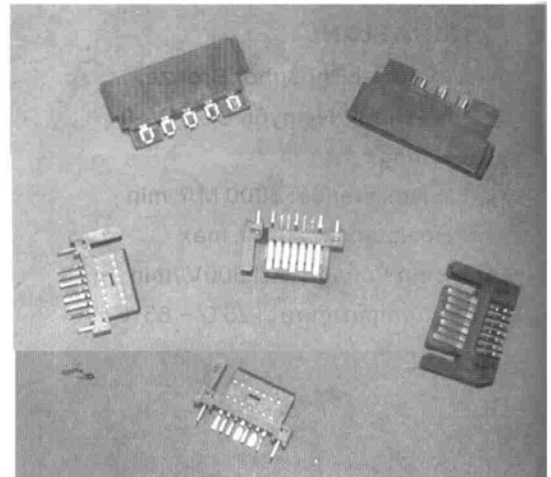
Contact Resistance: 30 mΩ max

Insulation Resistance: 1000 MΩ min.

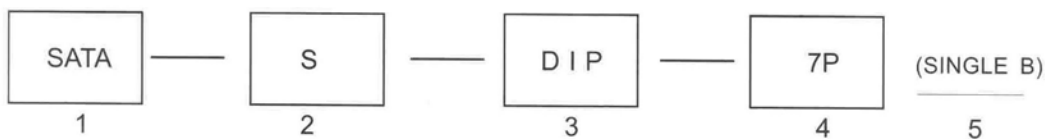
Withstanding Voltage: 500 V AC/min

Environmental

Operating Temperature: -55°C — +125°C



Order Information



1. Series No.

SATA

2. Connector Type

Y= Splintage Type
S=180°
R=90°
M=Mold Type

3. Contact Type

SMT
DIP

4. NO. Of contact

7, 14, 15, 22
P=Male
S=Female

5. A. Single A

B. Single B
C. Dual A
D. Dual B
E. Terminal to Bottom
F. Terminal to Top

G. W/key

H. W/O key
I. High insulation
J. W/ Backstop
K. W/O Backstop
L. Long Terminal

SERIAL ATA CONNECTOR

SATA Series

Material

Housing: SPS or LCP, UL 94V-0
Color: Black.

Contact: Phosphor Bronze or Brass

Plating: Gold plating over Nickel on contact area; Tin/Lead plating on terminal.

Mechanical

Insertion Force: 45N max.

Withdrawal Force: 10N max.

Durability: 500 cycles

Electrical Specification

Operation Voltage: 100 V AC max.

Current Rating: 1.5 A

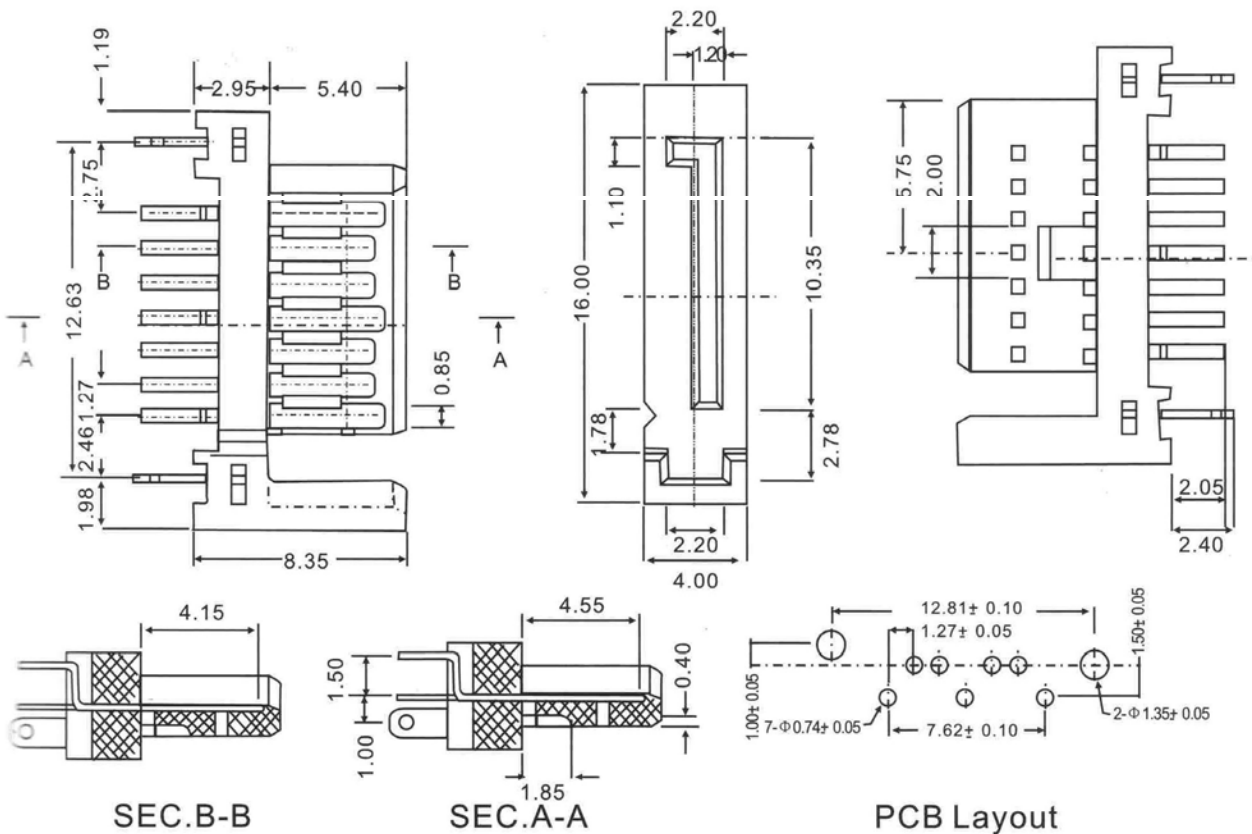
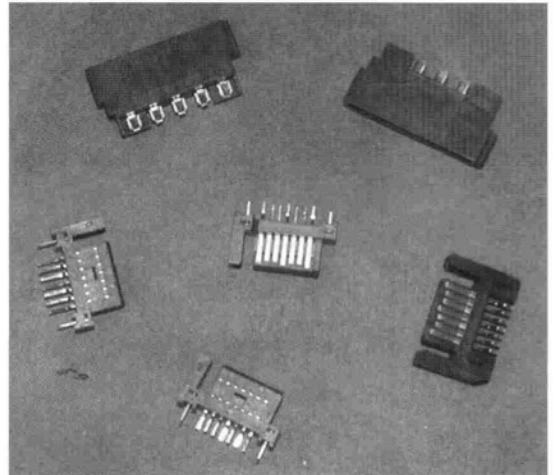
Contact Resistance: 30 mΩ max

Insulation Resistance: 1000 MΩ min.

Withstanding Voltage: 500 V AC/min

Environmental

Operating Temperature: -55°C — +125°C



SATA-S-DIP-7P(SINGLE B)

SERIAL ATA CONNECTOR

SATA Series

Material

Housing: SPS or LCP, UL 94V-0
Color: Black.

Contact: Phosphor Bronze

Plating: Gold plating over Nickel on contact area; Tin/Lead plating on terminal.

Mechanical

Insertion Force: 45N max.

Withdrawal Force: 10N max.

Durability: 500 cycles

Electrical Specification

Operation Voltage: 100 V AC max.

Current Rating: 1.5 A

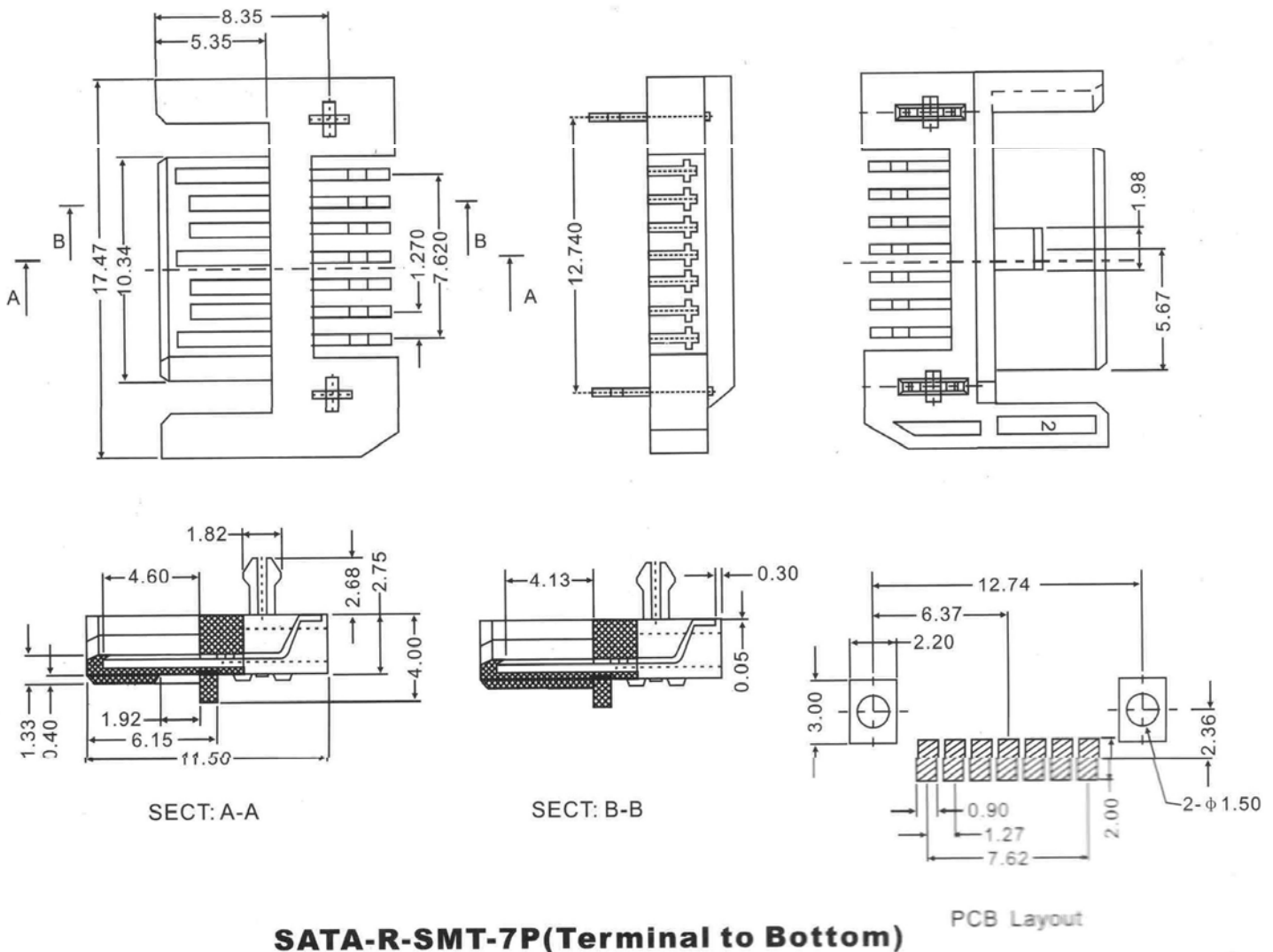
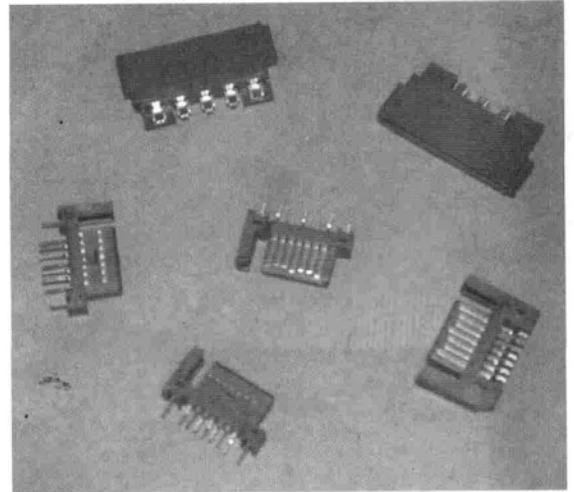
Contact Resistance: 30 mΩ max

Insulation Resistance: 1000 MΩ min.

Withstanding Voltage: 500 V AC/min

Environmental

Operating Temperature: -55°C — +125°C



SATA-R-SMT-7P(Terminal to Bottom)

PCB Layout

BOARD TO BOARD CONNECTOR

SATA Series

Material

Housing: SPS or LCP, UL 94V-0

Color: Black.

Contact: Phosphor Bronze

Plating: Gold plating over Nickel on contact area; Tin/Lead plating on terminal.

Mechanical

Insertion Force: 45N max.

Withdrawal Force: 10N max.

Durability: 500 cycles

Electrical Specification

Operation Voltage: 100 V AC max.

Current Rating: 1.5 A

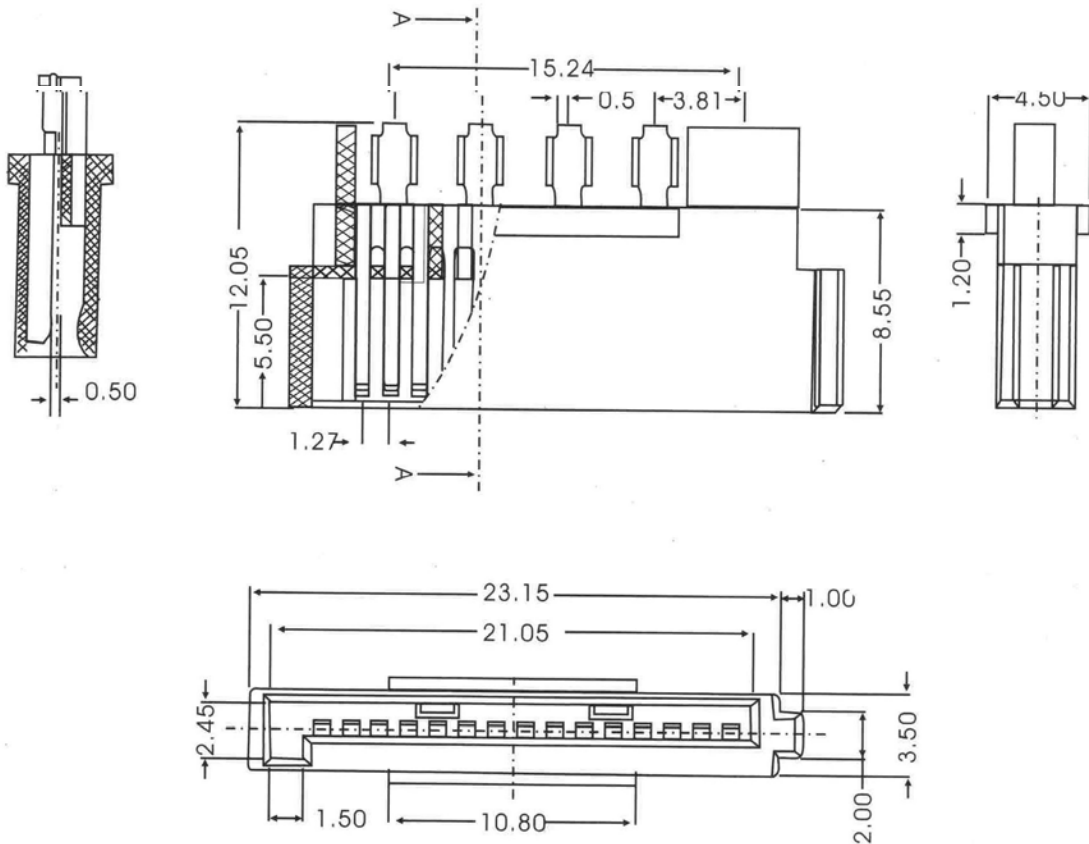
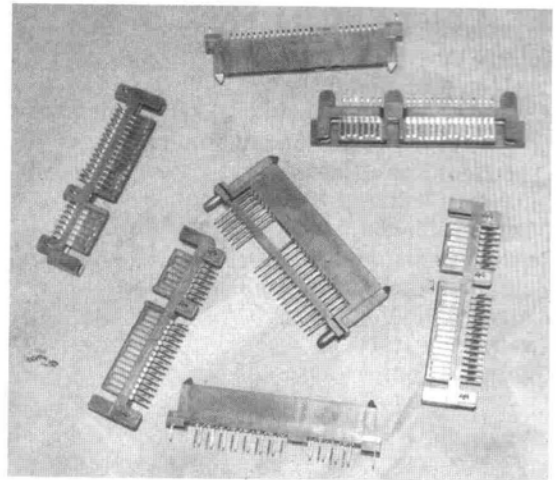
Contact Resistance: 30 mΩ max

Insulation Resistance: 1000 MΩ min.

Withstanding Voltage: 500 V AC/min

Environmental

Operating Temperature: -55°C — +125°C



SATA-M-15S(W/Key)

SERIAL ATA CONNECTOR

SATA Series

Material

Housing: SPS or LCP UL 94V-0

Color: Black.

Contact: Phosphor Bronze

Plating: Gold Plating over Nickel on contact ared;

Tin/Lead plating on terminal.

Electrical Specification

Operation Voltage: 100 V AC max.

Current Rating: 1.5 A

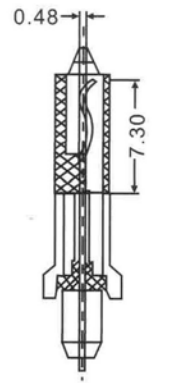
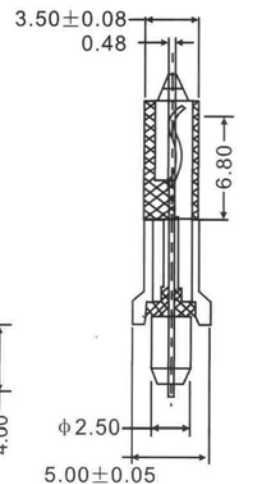
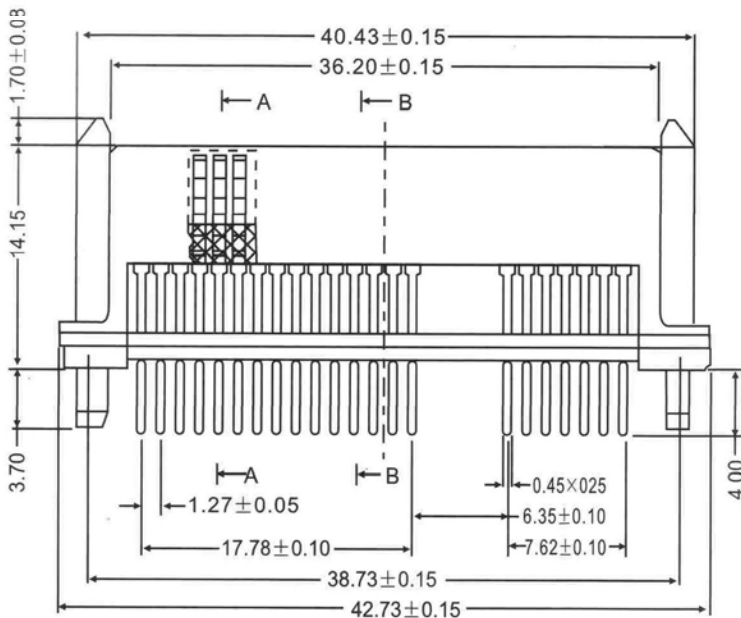
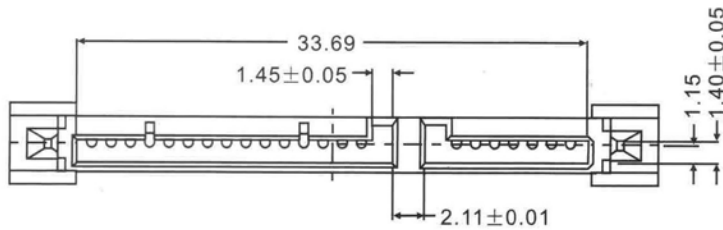
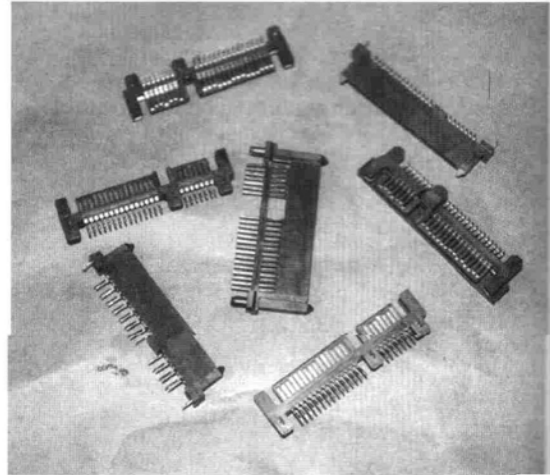
Contact Resistance: 30 mΩ max.

Insulation Resistance: 1000 MΩ min.

Withstanding Voltage: 500 V AC/min.

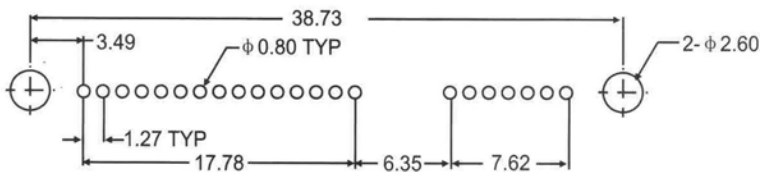
Environmental

Operating Temperature: -55°C — +123°C

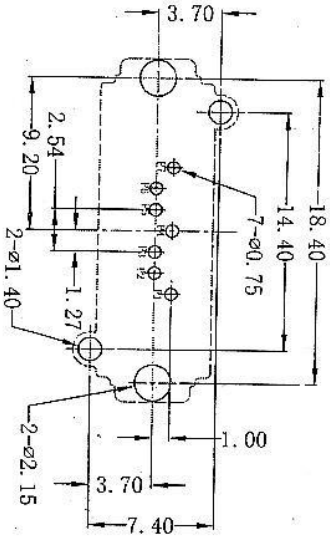
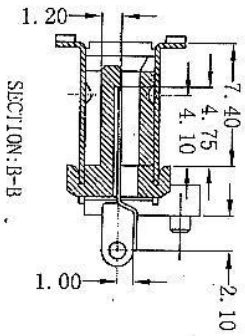
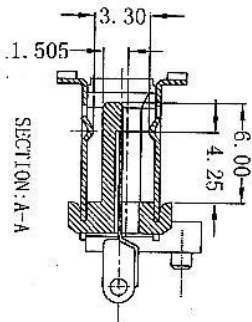
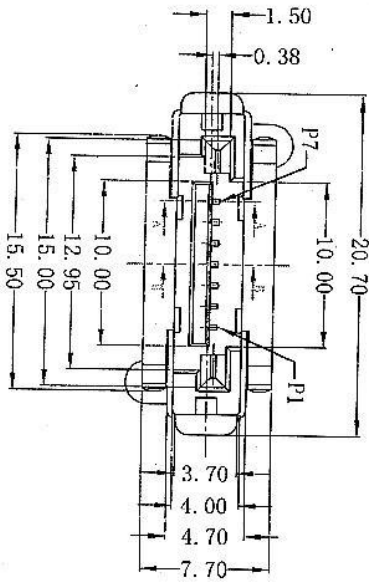
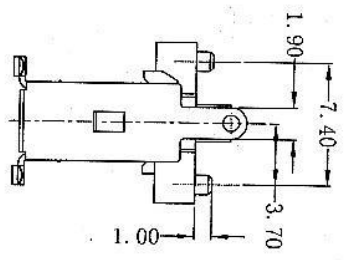
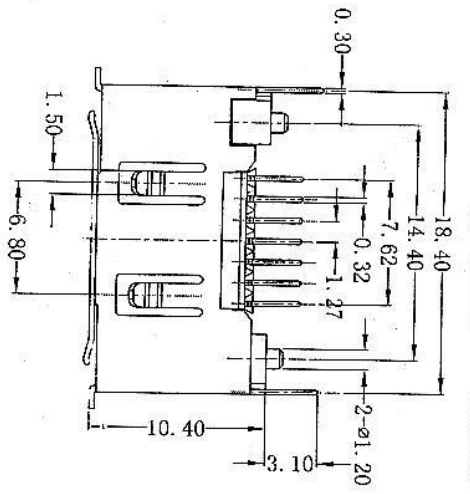


Secretary A-A

Secretary B-B



PCB LAYOUT



P.C.B. Layout
t=1.60mm

Material:
Housing: LCP, 94V-0
COLOR: Black.

Contact: Brass
Plating: Gold plating over Nickel on contact area; Tin/Lead plating on terminal

Mechanical
Insertion Force: 25N max.
Withdrawal Force: 7N min.
Durability: 2500 cycles

Electrical Specification
Current Rating: 1.5A
Contact Resistance: 30mΩ max
Insulation Resistance: 1000MΩ min
Dielectric Withstanding Voltage: 500V AC/MIN
Environmental
Operating Temperature: -55°C ~ +125°C

DRAWN	DATE	CHECKED	DATE	TITLE:
YQF	2006.05.20	<i>[Signature]</i>	20.6.6	SATA-S-DIP-7P 双A全铁壳V2 黑
APPROVED	DATE	PART NO.	CLIENT P/N	UNIT:
<i>[Signature]</i>				mm
ANG.		SCALE: free	FILE NO.:	REV. A
		NS-SATA-A00024		CF

未注公差:
.X ±0.38
.XX ±0.25
.XXX ±0.20
ANG. ±3°