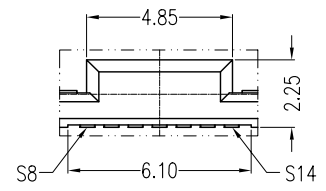
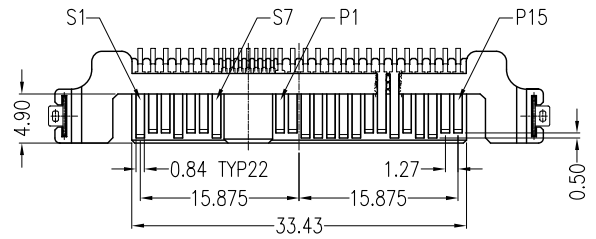


A



VIEW O
SCALE 3:1

NOTES:

***Material**

Housing: LCP, UL 94V-0 rated, Color: Black;
 Contact: Brass;
 Plating: Gold plating over Nickel on contact area; Tin plating on solder tail.
 Harpoon: Phosphor Bronze;
 Plating: Tin plating over Nickel.

***Mechanical**

Insertion Force: 25N max.
 Withdrawal Force: 5N min.
 Durability: 500 cycles

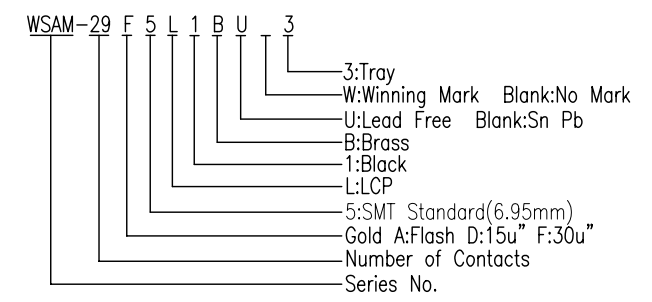
***Electrical Specification**

Current Rating: 1 Ampere per contact;
 Contact Resistance: 30 Milliohms max.
 Insulation Resistance: 1000 megohms min.
 Dielectric Withstanding Voltage: 500 V AC.

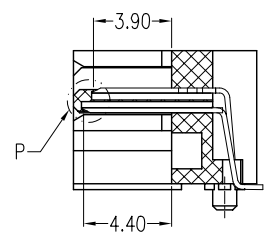
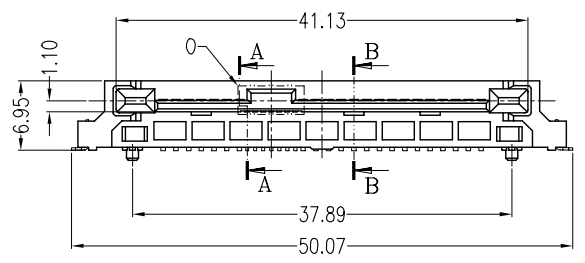
***Environmental**

Operating Temperature: 0°C to +55°C

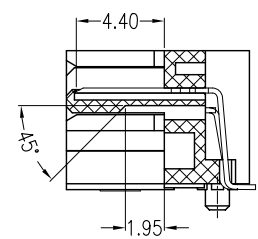
***How to order**



B

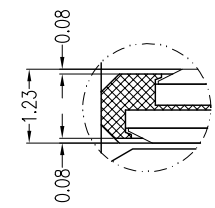
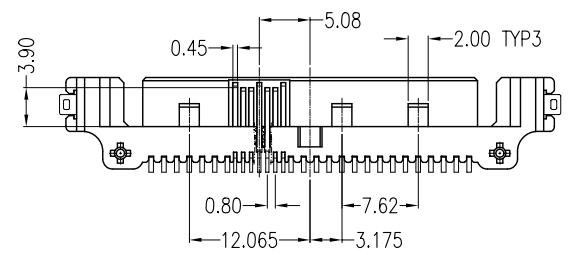


SECT A-A
SCALE 2:1



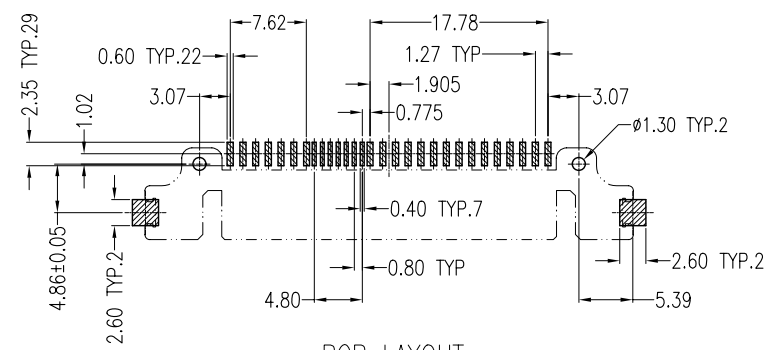
SECT B-B
SCALE 2:1

C



VIEW O
SCALE 3:1

D



PCB LAYOUT
TOP VIEW

REV	Units mm Scale 5:4		Drawing By Stacy	Date		
	Tolerance Unless Otherwise Specified		Reviewed By Roger	Date	Date	Title SAS 7+15+7P Add Tall SMT Type (Reverse) Male
	.X	~ ±0.38	Approval By Richard	Date	Sheet 1 of 1	
	.XX	~ ±0.25		Third Angle Projection		
	.XXX	~ ±0.20				
	Angle	~ ± 3°				Drawing No. WSAM-29PS-AN-N126